

**PEP Club offers
drug education**
see page 3

**Chamber of Commerce
installs board of directors**
pix on page 6

**Matmen head
for sectionals**
see page 13

Belleville Times

Serving Belleville Since 1909

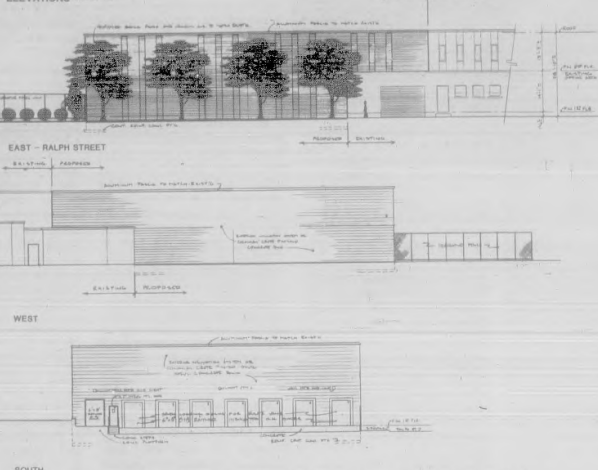
35°

82nd Year No. 9

An Orechio Publication

Thursday, February 14, 1991

ELEVATIONS (feet above sea level)



BLUE PRINTS...of the proposed expansion for Coyne Textile Services were provided by architect Robert Cozzarelli.

PROPOSED ADDITION
COTYNE TEXTILE SERVICES
137 RALPH STREET
BELLEVILLE, MO. 63701

Zoners give nod to Coyne expansion

By Mike Lazorchak

Everyday, headlines remind us of the grim reality of the economic slide. Layouts and cutbacks seem to be the norm these days, rather than the exception.

However, Belleville received an economic shot-in-the-arm last week when the Zoning Board approved a variance to permit Coyne Textile Services, 137 Ralph St., an expansion that will cost an estimated \$1.5 million.

According to attorney Frank Cozzarelli, who represented the garment service company, the variance was required under the municipal land use law since it is an expansion of a non-conforming use in a residential zone.

The final resolution will be drafted this month to be passed at the March 5 Zoning Board meeting.

The proposed expansion, extending from the southern end of the building, will add a 9,200 square foot warehouse and plant, Cozzarelli said.

There will also be a parking area across the street, now a vacant lot, providing 50 additional parking spaces for the company.

It seems fitting that wood fencing instead of metal, and suitable landscaping including shade trees.

The approval also provides a precedent to encourage other commercial development in Belleville. "It shows a commitment on behalf of the governing bodies to make a turnaround in economic growth," Cozzarelli said.

This is also a sign of action in union with the 1988 Master Plan designed to promote industrial and commercial growth.

"We are geographically in one of the best locations in Essex County for developers," Cozzarelli said.

He referred to the accessibility of highways and proximity to one of the largest markets in the world, New York, as ideal attractions for businesses like Coyne to come to Belleville.

Crime up 17 percent, police stats show

By Mike Lazorchak

Crime in Belleville rose more than 17 percent from 1989 to 1990 with a sharp rise in auto thefts as the biggest offender, according to statistics released by Police Chief George Lister.

"Unfortunately," Lister said as he sat behind his desk to begin the interview, "we went up in every category."

The figures are compiled in accordance with the state Uniform Crime Report in seven categories.

Four of the seven — murder, rape, robbery and aggravated

perpetrated by out-of-towners. Even more significant to the large increase in stolen cars is the high percentage committed by juveniles. Lister is adamant in his belief the leniency given to juveniles only encourages more juvenile crime.

"Something needs to be done to show juveniles they can be punished," Lister said. "As it stands now it is like a revolving door, they are arrested and released in as little as a day."

Lister advocates the idea of a "boot camp" for convicted juveniles. The boot camp plan would

BOE deadline postponed

Anyone interested in serving on the Belleville Board of Education may still file a petition to run after Gov. Jim Florio signed a bill postponing local school board elections until April 30.

The original election date, April 2, was changed in response to attempts to change the Quality Education Act, which should have a profound impact on available school aid.

The two vacant seats in this years election are three year terms.

As of the original Feb. 7 filing deadline, Joseph DelGuercio, of Linden Avenue, and Ralph Mazzuca, of DeWitt Avenue, were the only two who had returned their petitions, according to Board of Education secretary Ed Appleton.

Both Mazzuca and DelGuercio are the incumbents of the seats.

The new deadline to file a petition to run is March 7. Petitions are available at the Board of Education office, located at Belleville High School, between 8 a.m. and 4 p.m. any business day.

Crime in Belleville

Offense	1989	1990	Percentage Change
Murder	0	1	NA
Forcible rape	3	5	NA
Robbery	54	64	+18.5%
Aggravated assault and battery	85	112	+31.7%
Breaking and entering	246	268	+ 8.9%
Larceny / theft	878	966	+ 10.1%
Motor vehicle theft	403	541	+34.2%
Total incidents, 1989 — 1934			
1990 — 2272			
			+ 338 (+17.4%)

assault and battery — are considered violent crimes.

The other three — breaking and entering, larceny and auto theft — are designated as nonviolent.

The largest increase came in auto thefts, which did not surprise the police chief.

"I think six of the top 20 cities of auto thefts per capita in the nation are right in this area," Lister said.

According to Lister, a high percentage of the auto thefts are

take convicted juveniles off the street for six to eight weeks, Lister said.

The rise in larcenies, Lister said, could be attributed to the problem economy. Larceny/theft is defined in the Uniform Crime Report as "the taking of the property of another with intent to deprive him of ownership."

"Trends in the past indicate

(continued on page 8)

Empty store fronts:

Belleville for rent: Planner to unveil proposal

By Mike Lazorchak

Many times, a positive way to look at an otherwise bleak situation is to rationalize things cannot get any worse, therefore they can only get better. The Washington Avenue downtown district has deteriorated over the years almost to this point of frustration.

The need to revitalize the area is a priority for director of planning Robert Ringelheim and he is anxious to address the problem. Plans to help restore the lost business interest should be ready in two weeks, Ringelheim said.

Just a stone's throw from Town Hall, stands a row of empty storefronts evidencing the severity of the situation.

According to one merchant, some of these stores have been empty as long as four years.

The lack of businesses along the avenue does little to encourage a walking traffic of shoppers.

One merchant thinks people will only come to Washington Avenue for a specific purpose. Businesses are isolated creating very few browsers to enhance a sales flow.

There are a number of reasons offered to explain the demise of the avenue, but one of the biggest complaints by merchants and residents is parking.

Insufficient curbside parking, combined with the lack of a municipal lot in the area, make finding

a parking spot a hassle most people choose not to experience.

The separation of shopping areas in Belleville is another reason given to explain the lacking downtown area.

Small concentrations of businesses on Union Avenue and Main Street have prevented the creation of a unified merchant area on Washington Avenue, one merchant said.

Finally, some merchants feel high rents have forced many of the

smaller merchants to fold. Some progress has already been made with a few stores making facades improvements and new businesses coming into the area, but much more is needed to make Belleville thrive once again.

Finally, some merchants feel high rents have forced many of the



EMPTY STOREFRONTS...along Washington Avenue are a priority concern for town officials to restore Belleville's downtown district to thriving merchant arena.

Free subscriptions for service members

For the duration of the war in the Persian Gulf, Orechio Publications will send complimentary Belleville Times subscriptions to personnel in American armed forces overseas.

If you have an immediate family member in Operation Desert Storm, please forward his or her address to: Orechio Publications, 800 Bloomfield Ave., Nutley 07110.

County, cities oppose plans for redistricting

Essex County Executive Thomas J. D'Alesio today announced the County of Essex, along with the Cities of Newark and East Orange, have filed suit in Federal Court seeking to bar the ten-member New Jersey Apportionment Commission from proceeding with plans to redistrict Senate and Assembly Districts.

D'Alesio said that the census figures currently available to the bipartisan Apportionment Commission are "preliminary and subject to change."

He cited an agreement in settlement of a federal lawsuit in New York State last year which requires that a post-enumeration survey be conducted as a means of statistical verification or adjustment of census figures, and if adjustments are necessary they must be made by July 15, 1991.

"With the issuance of preliminary figures by the Bureau of Census, by their own admission and warning, these figures are subject to change and therefore are not intended for use in redistricting," D'Alesio said.

According to D'Alesio, redistricting and reapportionment of state legislative districts on the basis of preliminary population counts that have disproportionately and substantially undercounted populations throughout Essex County would constitute a violation of equal protection and the "one man, one vote" requirements of the U.S. Constitution.

Among localities that have challenged the accuracy of the census are Newark and East Orange, as well as Montclair, Orange, Irvington, Bloomfield, Nutley, Cedar Grove, Belleville, Glen Ridge and West Caldwell.

"Anyone in public office today who has the responsibility of planning for the future, has to be alarmed about the very real possibility of an undercount in the 1990 census," said D'Alesio.

"The concerns are both legitimate and alarming and, if the census counts are not correct, how can we accurately proportion our legislative districts," asked D'Alesio.

"Our whole system of democracy is founded on proportional representation and the very least of what we need and deserve is an accurate count," he said.

"Unaccounted segments of the population will unfairly translate into a reduction in tax dollars which are returned to the county and its municipalities and will also allow for a reduction in the county's legislative representation," he said, adding, "and that's what we have to prevent."

"There's something definitely wrong with the way the census was conducted in the Essex County area and we would be both foolish and irresponsible if we didn't do something about it," D'Alesio said, adding, "and that's why we went to federal court today."



DISCUSSING THE CENSUS — Essex County Executive Thomas J. D'Alesio (right) joins with U.S. Congressman Robert Roe (D-8th District) in discussing the 1990 census figures. The meeting took place in Washington, D.C.

Belleville resident charged with careless driving Feb. 8

A Belleville man was charged with careless driving in Bloomfield Friday night after police said his car struck another head on.

Bloomfield Lt. Steven Flanagan said Gary Compitano, 27, was driving south on East Passaic Avenue at 8:49 p.m. when his vehicle swerved into oncoming traffic, colliding with a car driven by 32-year-old Michael Bratmeyer of Montclair.

Compitano, who suffered "min-

or" injuries to the lip and nose, was treated at University Hospital, Newark, and released, Flanagan said.

Bratmeyer sustained pain in his chest, pelvis and left shoulder and a laceration above his left eye, according to police reports.

He was treated in the hospital's intensive care unit and moved from the unit Monday afternoon, Flanagan said.

Troops blood drive Feb. 26

The Belleville P.B.A., F.M.B.A. and Knights of Columbus will co-sponsor a blood drive Feb. 26 in support of American troops in the

Persian Gulf. Hours are 10 a.m. to 7 p.m. at Knights of Columbus Hall, 94 Bridge St.

10 Minutes Can Save Your Life!

Skin cancer needlessly kills thousands of people every year. But, in only ten minutes, you and your family can be examined by Dr. Angelo R. Bergamo. If there are any signs of skin cancer, they can be seen before they become deadly.

FREE SKIN CANCER SCREENING

Saturday - February 16

744-7300 x4296, 10 a.m. - 2 p.m.

Why wait for your federal income tax refund?



- receive your refund anticipation loan within a matter of days
- available whether we prepare your return or not

H&R BLOCK

125 WASHINGTON AVE., BELLEVILLE • 751-3836
155 FRANKLIN AVE., NUTLEY • 235-1000
299 GLENWOOD AVE., BLOOMFIELD • 743-0898

OPEN 9 AM - 9 PM Weekdays, 9 - 5 Sat. & Sun.
APPOINTMENTS AVAILABLE

Master Card, Visa, Discover & American Express Accepted
Speakers for your club or civic group available free of charge.
Call any office for information.

Golden Comments

By Jim Golden

John Leo commenting on society's protesting of a complex war in U.S. News & World Report airs a cogent note upon what L.F. Stone wrote in June 1965: concerning "the democratic forces" who aim to persuade their fellow citizens, much as many present day war protesters repine also, of the folly of the (Vietnam) War; the "religious forces" ("though many among them are not religious in a conventional sense") who want to testify to their own moral disapproval by disobeying the law, and the "revolutionary forces," who want to undermine the American political system or world capitalism.

Stone was a radical, a beacon to the antiwar movement and a constant thorn in the side of Lyndon Johnson, but here he sounds curiously conservative, approving only the first group of "democratic" dissenters who use rational argument to mobilize protest. His dismissal of the "religious forces" seems almost patronizing. (At the time, he apparently considered them somewhat unworldly and ineffective, and he may have caught a whiff of the self-dramatizing aspect of breaking the law.)

Why does this column by an early and ferocious opponent of the Vietnam War seem so quaint today? Well, Stone did not understand what TV was about to do to political debate in America, upping the value of symbolic protest and telegraphic stunts. But there's something more obvious: his faith in reason, argument and democratic procedures. He knew that peace movements, like war movements, slip up the irrational, "often becoming disguised vehicles for aggression and hatred." That's why he urged Vietnam protesters "not to express alienation or to bring about estrangement but to make free institutions work in foreign policy."

Stone's "democratic forces" are at work in today's peace movement, which seemed to spring up instantly, with more force than many... expected. But no one can say what character the peace movement will take on if the war is not over fairly soon. There are grand opportunities for psychodrama (I am filled with hatred) and rage," said a Harvard graduate-student demonstrator, who now has an opportunity to bury some of it under a peace banner.) This presumably comes under Stone's heading of the expression of alienation and estrangement.

There is confusion over causes... there is much more tolerance nowadays for alienation, and the society is much more fractured than at the time of Vietnam. For instance, we now have familiar domestic lobbies that seem to view war protest as an extension of pressure-group politics by other means. They include the more disruptive gay groups who seem to regard the pull war as an infringement on AIDS research ("Fight AIDS, not Arabs"). We also have the National Organization of Women, which opposes the war in large part because Kuwait and Saudi Arabia are nasty to women (not letting females drive and practicing "gender apartheid"), and the groups dedicated to the argument that blacks and Hispanics shouldn't support the war because America is still racist. WASHINGTON POST writer Juan Williams complains that TV audiences "are hearing primarily the shrill, racially divisive messages of leaders such as (Jesse) Jackson."

The antiwar movement is also home to an alliance of mostly antisemitic groups. This includes the Liberty Lobby, the Lyndon LaRouche organization and Louis Farrakhan's Nation of Islam, all of which attribute the Gulf war to various Jewish conspiracies. Almost as disarming are the leftover Vietnam protest leaders who are inexplicably using rhetoric, tactics and arguments of the 1960s, like generals fighting the last war. David Dellinger, back from being mobbed for 20 years, has already called for Bush's impeachment. (That was LBJ who conducted an illegal, unauthorized war, Dave, not George Bush.) The spacey former Attorney General Ramsey Clark, who detected no flaws in Ho Chi Minh, has not acknowledged any in Hussein, either. He refuses to condemn the invasion of Kuwait and has allowed the LaRouche organization and other antisemitic groups into his umbrella organization, Coalition to Stop U.S. Intervention in the Middle East. Clark was recently quoted as accusing the United States of "demonizing" Hussein and LaRouche, though most of us would say that these two gentlemen did a nice job of demonizing themselves. Selective anger seems to be the mood among antiwar demonstrators these days.

It's time for an insurance check-up

AUTO INSURANCE
no surcharges for 1st time uninsured motorist
HOME - TENANT SNOWMOBILE...

WE ARE SPECIALIZING IN BUSINESS INSURANCE... SMALL OR LARGE COMPANY FREE QUOTE.

TROISE INSURANCE AGENCY

172 Washington Avenue, Belleville
MON-FRI 9AM-5PM SAT 10AM-12PM 759-4100

FOR VALENTINE'S DAY

ROSSMORE PHARMACY "THE VALENTINE KING"

VALENTINE'S DAY CHOCOLATES

From Russell Stover.

1 lb. to 5 lb. Red Foil Hearts, Satin Hearts, Assorted Chocolates. Also: A complete line of Candy Cupboard, Peppermint and Fanny Farmer Chocolates.

PRECIOUS MOMENTS GIFT CENTER

NOVELTIES • CARDS • PLUSH ANIMALS • Plus many other Gift Items

"SHOP BY PHONE — WE DELIVER"

Stop by and see the largest selection in town AT

ROSSMORE PHARMACY
Lottery — Prescriptions — Gifts — Cards
MASTERCARD and VISA accepted

338 Washington Ave., Belleville • 759-1956
FREE PICKUP AND DELIVERY

Plaza Bootery
Quality Shoe & Handbag Repairs
MOST WORK DONE WHILE YOU WAIT
483 Franklin Ave., Nutley 687-8884

Advertisement

Only Our Name Has Changed

Bloomfield Chiropractic Center
D. SUSAN GUARINO CHIROPRACTOR

"Your Health is our concern"
GUARINO CHIROPRACTIC
Dr. Susan Guarino, Chiropractor

We've changed, but only in name! Bloomfield Chiropractic Center was established in 1977 on Belleville Avenue, Bloomfield. Dr. Susan Guarino and Dr. Gerald Martin were at that location for five years. In 1982 they relocated to 858 Joralemon Street, Belleville. Dr. Guarino is now the only practitioner at that location and recently decided to change the name of the practice to Guarino Chiropractic.

Dr. Guarino prides herself in teaching our community about health through Chiropractic. She believes its important to check the spine on a regular basis to detect subluxations. Subluxation is the interference of nerve supply by a misaligned vertebrae. Once the vertebrae is out of position it pressures the nerve which then interferes with the nerves' function. When that happens, the tissues and organs of the body receive a reduced nerve supply and that causes symptoms.

Upon entering the office, the

Doctor displays the "Chiropractic Kids Corner," a wall display of pictures illustrating all her patients under 17 years old. You are then greeted by her staff, Maryann Salfani, Dee Lowack, and Jeanette Freda. These women are always there, helping patients with questions in insurance, scheduling, etc. They recently had their Annual Patient Appreciation Week. All established patients were adjusted free of charge. New patients are also welcome that week for free service. Dr. Guarino feels it's a way for her to say "thank you" to her patients for their confidence in Chiropractic.

Dr. Guarino recently was appointed as a member of the Board for the Council of New Jersey Chiropractors. She also is on the career advisory council for Bloomfield High School; she is a member in good standing in the International Chiropractic Association; and was recently endorsed by the Better Business Bureau.

For further information about the Guarino Chiropractic Center, call 759-3600.

School 9 students receive education about drugs and alcohol from peers

Belleville grammar school students at School No. 9 received a unique education Feb. 5 about alcohol and drugs. While a teacher's lesson is very important, sometimes advice from a peer is invaluable.

Deborah Meola is the substance awareness coordinator for Belleville and she designed a program called the PEP Club, Peers Educating Peers, at Belleville High School.

The program is in its second year and is also coordinated by Phil Esposto of the guidance department and Mary Lynn Watts who is a guidance intern.

"We have 36 members and its growing," Meola said.

She hopes the club continues to grow and cited a recent \$10,000 grant for the Peers Educating Peers AIDS Education program as progress towards a successful future.

The club consists of juniors and seniors recommended by faculty and administration for participation. The students must maintain a C average and complete a 16-hour training program in drug and alcohol awareness.

"We prepare lessons appropriate for each grade level and the students give the presentation," Meola said as she watched

four of her students answer a question about alcoholism to the third grade class.

School No. 9 was the first stop this year for the PEP Club, but Meola intends to visit more schools. "We like to innovate," School No. 9 principal Pat Forti said, "and Ms. Meola has an excellent program."

NUTLEY FOOT CARE CENTER
Dr. Robert Lardiere
Surgeon • Podiatrist
"Complete Foot Care For The Entire Family"
230 Centre Street
Nutley
667-5070

A VALUABLE LESSON...taught by, from left, Anthony Papantino, Shannon Koch, Deanna Lacara and Allison Zampino of the PEP Club. The four spoke to third graders at School No. 9 about drugs and alcohol awareness.

Lawrence Calabro, CPA Thomas M. Kotulak, CPA

- Individual Tax Preparation • Corporate Tax
- Tax Planning • Accounting
- Estate Planning • Financial Planning
- Complete Small Business Accounting Services

Reasonable Rates

Call 661-2223

386 Franklin Ave. Nutley

Spec 4 John Pretto deployed to Gulf

Spec 4 John Pretto of Belleville was deployed to the Persian Gulf Feb. 6 as part of Operation Desert Storm.

A member of the 11th Air Defense Artillery Division, he was stationed at Fort Bliss, El Paso, Texas.

Pretto, 20, graduated from Belleville High School in 1988. He is the son of Alexander J. Pretto of Belleville and Doreen Corce of Bloomfield.



Spec 4 John Pretto

Get the most
for your car
insurance
dollar.

CALL
ME!

661-AUTO
(2888)

Anthony Vivinotto
GENERAL AGENT
359 Centre Street
NUTLEY
Allstate
Allstate Insurance Company



Gerald A. Volpe

Perna completes year at Rutgers, Newark

Ralph Perna, a 1990 Belleville High School graduate, has successfully completed his first semester at Rutgers University, Newark, with a 3.0 grade point average.

The son of Anna Marie and Ralph Perna of Belleville, he is pursuing a legal career.

PRESIDENT'S DAY WINTER CLEARANCE SALE
Starting February 14th

20-40% OFF
Jackets, Shirts, Thermals, Vests
Gloves, Sweaters, Quilted Flannels
(All Sizes Available)

SPECIAL CLOSETOUT
Carhartt \$XL \$31.95
Velour Jackets 2XL 3XL \$34.50
Brown & Black

Atlantic Uniform Co.
444 Washington Ave.
Belleville • 751-1242
Open 9 am - 5:30 pm Mon. & Fri. 9 am - 7:30 pm

Fradel's DELI MEATS CATERING

311-313 UNION AVE. BELLEVILLE
759-3509
Open 7 Days a Week FREE DELIVERY

Lean Domestic Boiled Ham \$2.79/lb.	Thumann's Liverwurst \$1.59 1/2 lb.
Homemade Italian Pork Sausage \$2.09/lb.	Italian Style Veal Cutlets (Cut from Leg) \$5.69/lb.
Thumann's Bologna \$1.59 1/2 lb.	Land 'O Lake White or Yellow American Cheese \$1.49 1/2 lb.
Perdue Chicken Cutlets \$3.69/lb.	Bottom Round Roasts \$2.99/lb.
Lean...Tender Beef Stew \$2.49/lb.	Fresh Flounder \$5.69/lb.
Home Baked Roast Beef \$3.29 1/2 lb.	

Fresh Fish for Lent
• Fresh Shrimp
• Fillet of Flounder
• Cleaned Calamari

Milk Fed Veal (for Veal & Peppers or Veal Stew) \$3.59/lb.

FAMILY MEAT PLANS AVAILABLE
WE ACCEPT FOOD STAMPS

SHIFMAN MATTRESS 98th Celebration SAVE 35%-50%

Treat yourself to the finest bedding... Shifman! Since 1893 Shifman has made their mattresses and boxsprings with more cotton, more steel, more wood, producing the best bedding in the industry today. Come in and choose the firmness that's right for you. Tremendous savings for a limited time only!

	REG.	SALE
BANCROFT • FIRM		
TWIN ea. pc.	\$ 210.00	\$ 99.00
FULL ea. pc.	310.00	169.00
98th CELEBRATION • PREMIUM HAND-TUFTED MATTRESS		
TWIN ea. pc.	\$ 420.00	\$ 219.00
FULL ea. pc.	520.00	289.00
QUEEN set	1200.00	669.00
*ELEGANCE • PREMIUM HAND-TIED MATTRESS & BOXSPRING		
TWIN ea. pc.	\$ 480.00	\$ 279.00
FULL ea. pc.	600.00	349.00
QUEEN set	1300.00	769.00
*CAMEO • PREMIUM ULTRA FIRM HAND-TIED MATTRESS AND BOXSPRING		
TWIN ea. pc.	\$ 570.00	\$ 319.00
FULL ea. pc.	690.00	399.00
QUEEN set	1450.00	849.00



SALE ENDS FEBRUARY 23, 1991

Mace Bros.
Fine Furniture

512 KEARNY AVENUE KEARNY, N.J.
(201) 998-0300

MONDAY, THURSDAY,
FRIDAY 10-9
TUESDAY, WEDNESDAY,
SATURDAY 10-6

FREE DELIVERY

Your Visa or MasterCard is welcome

Nutley Pet Centers

SALE TO THE CHIEFS
4 DAYS ONLY
FEB. 15-16-17-18

Tropical Fish Sale
Buy one at regular price
get 2nd one for 1¢
(on selected fish)

Prices cut by 40%
on all Aquarium set ups

DOG SWEATERS 50% OFF

BONE SALE
Buy one get one
FREE! (23" bone only)

406 Main St., Belleville
(across from K-Mart) 751-1221

701D Frank E. Rodgers
Blvd. North, Harrison 481-6996

BOTH LOCATIONS OPEN 7 DAYS

OUR OPINION

Come home, again!

"Money" magazine reports that in 1991 Norfolk, Virginia, will be the number one "hot spot" for increased value of single-family houses. Norfolk, Virginia? "Money" must be kidding! Meanwhile, the "iceberg" for housing values is Boston. Say it ain't true — or through — Mike!

Sadly, three areas of New Jersey are among the worst of icebergs: Monmouth/Ocean Counties; Newark metropolitan region; and Bergen/Passaic Counties ... each of which is expected to show percentage decreases in housing sales.

Perhaps this news is not that sad, after all. If lowered values must be our fate in Belleville, then more of the older, established civic-spirited families will remain. They will stay to fight back the taxes, crime and the other ills in our time and place.

Projections appear less favorably for selling, but good folks will stop running, running, running. For God and the marketplace work in mysterious ways at times.

Come home, come home again!

A good start

The soft-market, sluggish economy — dare we say recession — whatever the experts want to name it, is certainly not news to anyone. The people of Belleville, a proud, hard-working town, are feeling the stress of the times.

What is news is in the midst of this troublesome time, a member of the Belleville commercial community is expanding, creating more jobs and pumping some life into the town.

The expansion approval for Coyne Textile Services is proof that hope is not lost.

Now is an excellent time for commercial development, the price is right, and Belleville should offer every incentive to encourage businesses in that direction.

Belleville does have a lot offer, and it needs to let people know!

Actions do speak louder than words. The action taken by the Zoning Board is a good start, but it is only a start.

Ban triple trailers

They're coming!

Signs of protest against the triple-trailers are springing up all over New Jersey. The Belleville town council even passed a resolution to voice their opposition.

The arguments are sound. Compared to western states, New Jersey highways are more congested, older and simply not suited to handle the oversized vehicles.

The combined length of the triple-trailers is 110 feet and they weigh approximately 110,000 pounds. Traffic on the New Jersey Turnpike is imposing enough without the worry of these large, cumbersome vehicles.

An alarming 145 accidents occurred on a one mile stretch of Route 21 in Belleville during 1990. The problem caused enough concern for town officials to request help from state Department of Transportation.

While there is no empirical evidence to say that number would rise, why take the chance?

Letters Welcome

The Belleville Times welcomes letters, preferably 300 words or less, from readers. To be considered for publication, letters must be typed or legibly handwritten and must include the writer's address and daytime telephone number. Unsigned letters will not be published and names will not be withheld, unless publication would jeopardize the writer's personal or job security. We reserve the right to edit for length and clarity.

YOUR OPINION

Support's out there

To the editor:

An open letter to 9 year old Jason Crawford. Jason, I read your letter in the Belleville Times and I would like to respond to it.

First of all, I would like to say how proud I am of you, your spirit is what this country needs, keep up the good work!

Jason, when you said you were disappointed and mad, don't be. Washington Avenue alone does not in itself show all of the people's sentiment. Have your Dad take you and your brother for a ride throughout Belleville, and you will see many, many yellow ribbons and flags. By far, almost all the people of Belleville support our troops, as you and I do.

Just a few weeks ago there were many more ribbons than there are now because many of the ribbons and flags are being stolen or vandalized. There are those who would destroy our symbols. Well, Jason, let them, because they can destroy the flags and ribbons, but they cannot destroy our feelings.

Thank you for your letter. I hope it makes a lot of people think. Our boys are in a foreign land fighting for us. Support them!

Good luck with your project!

Joe Cameron

Solid decision

To the editor:

I would like to thank Dr. Noonan for his recent letter stating that I was instrumental in hiring Bruno Associates the Township Grant Consultant.

My decision to vote for the firm was based on their past performance of grant funding for the Township of Belleville. At a cost of 23 thousand dollars, a savings to the township of 8 thousand dollars. I feel that this was a solid decision based on cost effective government. Mr. Ringelheim, an expert in planning and structure was hired to provide professional services to the Planning and Zoning Boards, and to oversee the very important code enforcement department.

Bringing experts at the beginning of this form of government will draw criticism because of the initial cost factor, but this is what is needed for long term results. The government prior was a government of impulsiveness, operating day by day without the benefit of expert planning and development.

When I undertook the effort to change the form of government, the people requested a change. This is the change that will benefit us all in the long run. The ills of past administrations will not remedy in six months, or even a year or two. For effective and efficient government to operate, we need to implement professional expert systems that will eventually restore our community to its potential.

Again I would like to thank Dr. Noonan for crediting me with being instrumental in resolving a 50 year old flooding problem in our Silver Lake District. The engineering firm hired for 6 thousand dollars to remedy this long neglected problem is again an indication of a responsive government. All though I appreciate the credit Dr. Noonan affords me, the credit should go to the Belleville Township Council, that is working for the betterment of the community.

Mario Drozd
Councilman-at-large

Inspired by their bravery

To the editor:

At a time when the men and women in our armed forces are facing their greatest test, we at home are facing a test as well. Our test is to maintain our unity and resolve, as our troops are doing in the Persian Gulf.

We don't want Saddam Hussein to take this country's tolerance for anti-war demonstrators as a signal he should wait out our resolve in a long and bloody war.

I'm outraged at the brutal treatment of our POW's. And I'm saddened to see the media give so much attention to the small number of anti-war protesters who have sprung into action. It seems that every time a few protesters pick up their signs, the cameras swarm around them, and they end up on the news.

Our soldiers have said that they have a job to do and are going to get it done. I feel I have a job to do, too. And that's to stand up in strong support of our troops.

I want them to know that I and the American people are very proud of them. We are all inspired by their bravery.

I hope that you'll print my letter, and others like it, in the days ahead. Thousands of local American newspapers are reaching our men and women in uniform every day. Your newspaper may be one of them. I want the troops to know that we hold them in our thoughts and prayers every day.

Henry J. Kraft

What's so positive?

To the editor:

At a recent public town meeting, Mayor Marina Perna delivered her "State of the Township" address. I attended that town meeting and wholeheartedly agree with her. Nazziola's comments on the speech that it was "light on substance of accomplishments."

Understandably, Mayor Perna, in preparation of her message, must have searched high and low for something positive to report. As a concerned citizen, I and all the other citizens of Belleville share her disappointment having had to come up empty handed, for all intents and purposes. Is it any consolation that the Mayor herself and her Council are to blame for this? After all, they with the Manager(s) have been running the show. In her address, Mayor Perna touched on the action taken by the State Department of Environmental Protection. Belleville is in danger of being socked with heavy fines, due to the neglect of the Manager and Council to clean up the public works yard, referring to the issue as "running a solid waste facility without a permit."

The citizens are questioning how the town got to be in the state it is in. After all, with the change in form of government, we were promised the town would be run by professionals instead of part time administrators. So what happened? After all, the new "regime" took over a "going concern" which in their professional opinion only needed improvement in efficiency.

Regarding the public works yard... In April of '90 the yard was "spotted" (maybe because it was election time?). Due to spring clean-up, during May and June debris began to accumulate. This is understandable. The new council was well aware of the modest accumulation documented when they posed for a Star-Ledger press release in front of the debris, before they took office, pledging, as a campaign issue, to make the "clean up" their Number 1 priority!!!

So they hired an \$80 per hour manager, assisted by a taxpayer paid staff. Next they reinstated the (suspended) superintendent of public works and hired a \$66,000 a year director of public works!

With all this high priced, full time "professional" administration, one should expect that Mayor Perna would have something positive to report after 7 months of being in charge. Instead the public works yard developed in being the worst eyesore in history since the fire in 1984.

Was all this because of lack of money??? We don't pay enough taxes??? ABSOLUTELY NOT!!! At the town meeting of September 8, 1990, Resolution Number 6 transferred \$700,000 surplus from the garbage contract dumping fees, accumulated as a result of successful implementation of Belleville's recycling program!

One more observation, this one related to the new police facility under construction. What I perceive as a desperate attempt for something positive to report, and to improve her tarnished image, the Mayor arranged for a solo picture with the County Executive Thomas D'Alessio. She obviously cannot bring herself to give credit to the prior administration, solely responsible for this project, implemented with the ground breaking on May 31, 1990.

In the press release, no mention was made that the Community Block grant of \$180,000 for the financing of the handicapped access of the existing municipal building, was obtained through the efforts of the previous administration, with the cooperation of the previous County Executive, Nicholas Amato and the director of the County's Division of Housing and Community Development, Rosemary Senatore-Glocone. On the contrary... the press release quotes D'Alessio stating: "This building that we're providing"...

The press release closes with the statement that upon completion of the project, later this year, county officials once again will visit the site. This visit, I assume, will be in the format of a dedication ceremony. The Commissioners of the previous administration, together with the citizens' building committee, responsible for the realization of the new police facility should have a front seat at the ceremony. Let us not forget that. And if there is any room left on the dias, in the back, Mayor Marina Perna, if she is still in office.

Cornelis P. Vander Zwan

Where's the flag?

To the editor:

It is very disturbing to ride through town and see such a small showing of support for the men and women serving our Country in Desert Storm by the residents and businesses in Belleville.

It was very nice to see a large participation of the beautiful decorations for Christmas and even Halloween. Now about an even greater participation by displaying the American Flag for our troops.

Barbara Benedetto

Along the Passaic

Where is the old swimmin' hole?

By Ella F. Filippone
Executive Administrator,
Passaic River Coalition

"When the settlers from Connecticut first set foot on New Jersey soil more than 260 (now 321) years ago, the site of the city which they were destined to found must have presented a charming rural picture of green meadows, wooded slopes and pleasant valleys through which numerous streams made their way to the then crystal waters of the Passaic." So begins a book, *The Running Brooks and other Sketches of Early Newark* by Edward S. Rankin, C.E. The first chapter entitled "The Vanishing Streams of Newark" begins with the above quote, and has always been one of my favorite descriptions of a place long changed and gone.

Several years ago, our beloved Uncle Tom Filippone, found this book in a closet in the family home on Alexander Street in Newark, and gave it to me to become more familiar with Newark in the days of its beginnings when there was a watering place at Broad and Market Streets. It tells where all the lakes were

located (mainly used to provide ice for the people of the community), and how some regions got their rather uncommon or historic names.

In 1930, the author still perceived Newark as a country area, and thus included a chapter on "The Old Swimming Hole." "How incomplete would be the life of any normal village or country bred boy without that veritable fountain of youth, immortalized in song and story, the old swimming hole!" As the village grew into a city and the city moved farther and farther into the country, "the boys must search for, until, in the end, the seashore or lake resort or perhaps the club tank must take the place of the river and the woodland pool." Where was the favorite swimming hole? No specific place is identified. "They had the whole river, with its wooded shores and its crystal waters." In a later time, people from the Lower Passaic area would drive all the way to Wayne for a day's outing and swimming in the Passaic River. Many recreational areas had been established in this portion of the watershed and

summer bungalows lined the banks of the river. And for those who wanted more wilderness, they would find campsites in the highlands of Morris and Passaic Counties. Now the romance is gone. The days of swimming in the Passaic River remain in the memories of people we meet from time to time who tell stories of their childhood and the river. So many sincerely would like to see the return of those days when the waters were "crystal clear."

Reminiscing like this builds on our dream to bring the river back to its former glory. While we can never go back, we can rebuild using designs which are in harmony with nature. We can begin to preserve certain special areas, which still remain, and not overdevelop. We need jobs and all the good things that come with progress, but we also need a healthy place to live. Every once in a while we must look back at what once was and take account of what we have done, good and bad, and pursue a course to correct the mistakes. We at the Passaic River Coalition are on such a course. Come join us!

Belleville Times

Serving Belleville Since 1909

(U.S.P.S. 649-220)

Publisher: Frank A. Orecchio

Assistant to the Publisher:
Annie Ziem

Published Every Thursday
At 155A Washington Ave.
Belleville, N.J. 07109

Second-Class Postage Paid

At Newark, N.J.

Postmaster: Send address changes

to: The Belleville Times,
155A Washington Ave., Belleville, N.J. 07109

Social Editor: Helen Maguire

Sports Editor: Michael Lamberti

Advertising Mgr.: Celeste Federico

Art Director: Diane Lombardy

All departments call:

759-3200

Fax: 667-3904

Annual Subscription \$14.00

Senior Citizens \$ 7.00



HAPPY VALENTINES...were sent to the troops by students from the Wise Owl Nursery School on Washington Avenue. Back row, from left, Jessica Wright, Michael Conway, John Romano and Jessica Mozleka. Front row, Matthew Kistner, Alicia Marcondia and Melissa Agnello display their Valentine artwork.

Prayer for the troops

Lucille Foselli, a Belleville resident, speaks with pride about her son, Tom. He graduated from Belleville High School in 1963, joined the Marines and finally settled in Florida with his wife.

While these are valid reasons for a mother to be proud of her son, it is what Tom just did for the troops in the Persian Gulf that really brings a smile to her face. Here is the story, according to a clipping from a Florida newspaper Foselli sent to the TIMES.

Tom, who owns a printing company in Stuart, Florida, mailed 400,000 prayer cards to servicemen and women the week after Christmas.

The prayer written on the cards is Psalm 91 and it has come to be known as *The Soldiers Prayer*.

The story behind *The Soldiers Prayer* originates from some of the bloodiest battles of World War I. It is said every member of the United States Army 91st Brigade read the prayer daily. Despite fighting in three battles, Chateau Thierry, Belleu Wood and the Argonne Forest, where casualty rates were as high as 90 percent, the 91st Brigade is said to have suffered no combat-related casualties.

Foselli first heard the story from a missionary who asked if he would participate in a project to send the prayer cards to the Gulf.

A 'Desert Shield' '91

(Psalm 91)

He who dwells in the secret place of the Most High
Shall abide under the shadow of the Almighty.
I will say of the Lord, "He is my refuge and my fortress;
My God, in Him I will trust."

Surely He shall deliver you from the snare of the fowler
And from the perilous pestilence.

And from the perilous pestilence.
He shall cover you with His feathers,
And under His wings you shall take refuge;
His truth shall be your shield and buckler.

You shall not be afraid of the terror by night,
Nor of the arrow that flies by day,

Nor of the pestilence that walks in the darkness,
Nor of the destruction that lays waste at noonday.

A thousand may fall at your side,
And ten thousand at your right hand

But it shall not come near you.
Only with your eyes shall you look,

And see the reward of the wicked.
Because you have made the Lord, who is my refuge;

Even the Most High, your habitation,
No evil shall befall you,

Nor shall any plague come near your dwelling;
For He shall give His angels charge over you.

To keep you in all your ways.
They shall bear you up in their hands,

Lest you dash your foot against a stone.
You shall tread upon the lion and the cobra.

The young lion and the serpent you shall trample underfoot.
Because he has set his love upon Me, therefore I will deliver him;

I will set him on high, because he has known My name.
He shall call upon Me, and I will answer him;

I will be with him in trouble;
I will deliver him and honor him.

With long life I will satisfy him,
And show him My salvation.

KITCHENS BY VERSA



We can supply your needs...
AT THE RIGHT PRICE!!
Bring us your kitchen estimate from
Channel Lumber, Rick's,
Mr. Good Buys or Home Depot
AND WE WILL BEAT IT.

Dinner for two with the purchase
of a kitchen in excess of \$1,000.00

VERSA SUPPLY CO.
30 Wilson Ave., Newark, NJ
Tel.: 589-3355

OPEN UNTIL 8 PM TUESDAY AND THURSDAY

Watch OBC-TV

"Tribute for the Troops"

The Hop in Totowa, a popular 50's and 60's club will be hosting a charity event on Sunday Feb. 17th at 7 p.m., in an effort to raise \$10,000 to support the troops overseas. All proceeds will go directly to the American Red Cross.

"Tribute for the Troops" will be a re-vitalized 1940's USO party. Performances by The Duprees, The Impalas, The Infernos, The Grease Band, Andre and Cirell and the Party Animals are sure to make for an exciting event. Other events that evening are to include an all-

American salute from the National Guard, door prizes, 50-50's and an auction which will include autographed items from Frankie Valli and James Brown.

The \$10 donation at the door will include admission to a photo session with members of the New York Giants at 6 p.m.

Invited to the event are CBS, Bobby J, Frankie Valli, Steven Baker, Otis Anderson and James Brown. For ticket information please contact Joanne at the Totowa Hop, 942-8867.

Liam Nelson

For Hair

Wednesday Hair & Nail Specials

PERM CUT & BLOW DRY \$50.00
REG. \$60

MANICURE & PEDICURE \$22.00
REG. \$32

MANICURE \$7.00
REG. \$10

162 Chestnut Street, Nutley
661-0750

Don't Miss The "TRAVEL TIME" Boat!
A Cruise for ALL Reasons:

- * Singles * Honeymoon Packages
- * Celebrity Sports * Disneyworld
- * Unique Theme Cruises * Seniors
- * Affinity Groups * Business Seminars
- * Last Minute Discounts

MIS TRAVEL TIME
1-800-359-4786
(201) 736-5550
Contact: Jaye Tarantino

"Anchors Aweigh!"
February is National Cruise Month
Attractive Low Rates for 1991 Sailings

Make 1991
the year that you
take that long awaited
dream vacation!

travel time
ESSEX GREEN PLAZA
WEST ORANGE, N.J. 07052
Fax: (201) 736-8919

Pariso Brothers Furniture



Bring the New look of dining to your home...light & lively. Sophisticated but not stuffy. Crafted from fine hardwoods. Table features thick 4" round top that extends to 54" with the leaf provided. Four arrowback chairs have extra-thick padded seats.

Table & 4 Arrowback Chairs

\$599

REG. 1999

Available in garden oak

16 Washington Ave. Belleville
759-2273

Free Parking in Front of Store

VIDEO DYNASTY

WE HAVE THE GAMES YOU'RE LOOKING FOR...
PAST...PRESENT...FUTURE! AND AT A PRICE

President's Day / Clearance Sale

Video Games
marked as low as

\$9.99

LYNX

GAMEBOY

SEGA

Nintendo SEGA GENESIS

All Major
Credit Cards Accepted
Open 7 Days A Week
For Your Shopping
Convenience



SEGA GENESIS
'30 CASH REBATE COUPON

OFFER GOOD JAN. 15,
THRU FEB. 28, 1991
ONLY

SEGA GENESIS

388 Main St. Belleville, NJ
(Grand Union Shopping Center)
759-5350

495 Kearny Ave. Kearny, NJ
(Inside Super Video)
991-1888

Charles Jewelers

Since 1945

GEMOLOGISTS



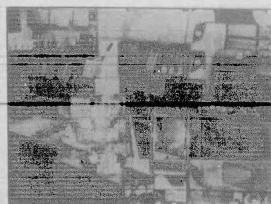
Dear Friends:

During this happy and festive Valentine season our thoughts turn to our customers and friends who have made our growth and success possible.

This year however, our thoughts also turn to those in our armed forces who are involved in operation Desert Storm.

Our hearts are with them and their families at this time. We wish them a safe and successful return. May the Lord protect all of our men and women who are protecting "life, liberty, and the pursuit of happiness."

Warmest wishes,
Charles Jewelers



WE DO IT ALL FOR LESS - UNDER ONE ROOF

One of New Jersey's largest pawnbrokers-jewelers with an enormous inventory of fine jewelry at discount prices...

- * Diamond Setting
- * Custom Jewelry Design
- * Remounts
- * Repairs of All Kinds
- * Free Ear Piercing
- * Minor Repairs
- * While You Wait Appraisals
- * Watch Repairs
- * Complete Refinishing of Jewelry
- * Buying and Selling Estate Jewelry
- * Engraving
- * Pearl Restringing
- * Gold Buying

163 Washington Ave. • Belleville
759-2468

Chamber installs board of directors at February luncheon



BUSINESS AS USUAL...from left, Chamber of Commerce Treasurer Paul Goldman talks turkey with Lou Paraboschi of Palmer Video and Ralph DePiro of Nutley Pet Center.



CHAMBER OF COMMERCE...installed its board of directors for the upcoming year at a luncheon Feb. 4. Town Manager Bertrand Kendall was the keynote speaker for the luncheon. From left, seated, chairman Jaye Tarantino, executive secretary Mary Ann Flor, president Rita Truise, Mary Perry and Nancy Zrelli. Back row, from left, Lou Paraboschi, treasurer Paul Goldman, Mike Casale, Don Galgano, Ralph DePiro, John Ercord, Carole Tirdila, Arnie Zlen, Henry Rosenberg, Donna DeVito, J. Michael Layton, vice-president David Bryant, John Ferrara, vice-president Frank Marmo and vice-president Tom Spillane.

We'll Make You Smile Today

Start Smiling!

consultation, 2 x-rays and an oral exam...

No Charge

an \$85 value at no charge with this ad. hurry offer expires 2/28/91 - by appointment only

Smile Today

James D. Muglia, DDS, PA, FAGD
Family • Cosmetic • Restorative Dentistry
24 Hour Emergency Service

10 Franklin Avenue • Nutley
Dial "NO PAINO" (667-2466)



WELCOME...chairman Jaye Tarantino pins yellow ribbon on Dr. Ralph DiMato of Essex County Chiropractic Center as Joseph McGulre of the Trust Company of New Jersey looks on.

Five area students awarded scholarships

It was announced by Joan Islami, RN, Vice President of the William F. Grupe Foundation, Inc. that five area students were among the 25 candidates recently selected by the Grupe Foundation to receive scholarship grants to aid in the advancement of medical education.

These students are Mary Argieri of Bloomfield, a nursing student from Clara Maass School of Nursing, expecting to receive her RN degree in May; Robert Rubino of Nutley, a fourth year medical student at the New Jersey Medical

School, expecting to receive an MD degree this year; Albert Sargentelli of Belleville, a third year student at Life Chiropractic College expecting to receive a DC degree in 1992; Raymond Eskow of Bloomfield, a fourth year medical student at New Jersey Medical School expecting to receive an MD degree this year; and Bruce Monastersky of Bloomfield, a third year medical student at New Jersey Medical School expecting to graduate in 1992 with an MD degree.

SENIOR CITIZEN SPECIAL Tuesday & Wednesday Only

PERMS

\$45.00

Includes
Haircut

ALL OTHER SERVICES

20% OFF

WITH ALANA ONLY
BY APPOINTMENT ONLY



Illusions
FULL SERVICE SALON

MEN AND WOMEN

Hair Designers

378 Centre Street, Nutley

284-0926

Open: Tues. 10-7; Wed. 10-6; Thurs. 10-7; Fri. 10-9; Sat. 9-5

Guidance Dept. introduces new program

The Guidance Department at Belleville Middle School is introducing a new program which will help to develop positive values in students.

The program is part of the New Jersey State Department of Education's directive to provide values in education for students.

The Middle School project will consist of periodic group assemblies on selected topics. This will then be followed up with small group discussions by the social studies teachers.

The theme for this year is "Understanding Self and Others." The goal of the program is to help students see the importance of getting along and respecting others. It is only through understanding others that world peace can be achieved.

The Middle School program is being coordinated by guidance counselors Jerome Weiss and Joseph Burns.

Tax Time Shouldn't Be This Taxing



That's why it's our goal to make your life easier by taking all that trouble off your hands!

Paul Goldman, CPA

- Personal Income Taxes
- Self Employment
- Tax Planning
- New Businesses
- Corporate Taxes
- Estate Accounting

Call For Appointment
759-7791

First Communion Memories...

Yesterday. Today. Tomorrow!

How quickly the years go by... and what treasures these special days become! Rowe-Manse has a First Communion Shop offering a complete array of wonderful dresses for this once-in-a-lifetime occasion. They are true heirlooms, worthy of being passed from one generation to another. Priced from \$60.00 to \$380.00.

You'll find veils and headpieces, gloves, bibbles and underthings, bibles and everything from lovely Communion dolls to enchanting music boxes.

Small World Fashions for Children, Upper Level.



Rowe-Manse Emporium

The Specialty Department Store they come to from everywhere.
Route 3 and Bloomfield Ave., Clifton, NJ 07012 • 201-472-8170
Located 1 mile East of the Garden St. Ferry, adjacent to Rt. 1, Silverstone Sq. Ch.
Valentine Browsing Hours: Daily 10-9, Saturday 10-6, Open Sunday 11-5

All Major Credit Cards Accepted

IRA tax-deferred growth — still a great way to secure your future.



SMART CHOICE - AN IRA ROLL-OVER TO PROVIDENT

Now — more investment choices for faster growth.

Annual contributions to your IRA for 1990 are acceptable until April 15th. Rolling over your IRA into a Provident high yield investment can be done at any time. Remember — an early contribution or rollover will increase your tax-deferred earnings.

Come in or call toll-free in New Jersey: **1-800-624-2806**



THE PROVIDENT
SAVINGS BANK

Offices throughout New Jersey • Member FDIC

...to simplify your financial life.

Relive American history

Through the Belleville Public Library and Information Center's book discussion series, library patrons and participants can relive American history with humanities' scholar Frank De Lisi, by attending the afternoon book discussion on Wednesday, April 20, at 1 p.m. or the evening book discussion, also on George Washington on February 25, at 7 p.m. Books are provided at the library's Circulation Desk, once you register.

New videos added

New videocassettes added to the collection of the Belleville Public Library and Information Center include "Dick Tracy," "Gremlins 2," "Miami Blues," "Stanley and Iris," "Betsy's Wedding," "I Love You To Death," "Another 48 Hours," and "Adventures Ford Fairlane." The charge is \$1 per night for videos and \$2 on weekends and holidays. If you wish to donate an almost new video to the library, please call the director at 450-3434. Donations to establish video collections or donations of new videos should be addressed to the director at 450-3434.

Events upcoming

Feb. 14 — "Very Bloody Civil War," part of the PBS Video Series, will be shown at 1 p.m. at the Belleville Public Library and Information Center, 221 Washington Avenue. Call the library at 450-3434 to participate.

A tax service, conducted by Rutgers University, will take place from 6 to 9 p.m. at the Belleville Public Library and Information Center, 221 Washington Avenue. Call the library at 450-3434 to make an appointment for this service.

Make a Valentine Card will take place from 3:30 to 4 p.m. at the Belleville Public Library and Information Center, 221 Washington Avenue, in the James J. Cozzarelli Jr. Children's Room.

Feb. 16 — A Secret Movie will be shown at 2 p.m. at the Belleville Public Library and Information Center, 221 Washington Avenue.

Feb. 19 — A Crocheting Class for Beginners, conducted by Anna Rosa Mazur, will take place at 1 p.m. at the Belleville Public Library and Information Center. Call the library at 450-3434 to participate.

A Holiday Craft will take place from 1:15-4:45 p.m. at the Shafter Branch, 30 Magnolia Street. Call the Shafter Branch at 450-3438 for further information.

An AARP Tax Service will be offered from 10 a.m. to 3 p.m. at the Belleville Public Library and Information Center. Call the library at 450-3434 to make an appointment.

Feb. 20 — A Lecture and Book Discussion on the book "George Washington," by John Alden will be conducted by Frank De Lisi at 1 p.m. at the Belleville Public Library and Information Center. Call the library at 450-3434 to register.

A Book Swap for Children will take place from 1:15-3:30 p.m. at the Shafter Branch, 30 Magnolia Street, while a book swap for adults will take place from 2 to 2:30 p.m., also at the Shafter Branch Library.

The Community Mental Health Services of Belleville, Bloomfield, and Nutley will conduct a Parenting Workshop at 10:30 a.m. at the Shafter Branch Library, Belleville Public Library and Information Center, 30 Magnolia Street. Call the library at 450-3438 to register.

BOOKMARKS

By Adrea Cohen



TELEVISION APPEARANCE — David Bryant, library director, and Giles Wright, director, Afro-American Studies, the New Jersey Historical Commission, recently appeared on *Libraries on Focus*, which airs on Tuesdays at 9:05 p.m. on Channel 32, to discuss Martin Luther King. The show was made possible by a grant from the Martin Luther King Jr. Commemorative Commission. Wright recently addressed the Belleville Public Library and Information Center on the topic of "Afro-Americans in New Jersey," a program also funded by the commission.

Black History Month

As a result of a matching grant from the Martin Luther King Jr. Commemorative Commission, the Belleville Public Library and Information Center will be offering three book lectures and discussions on Black Literature by scholar Dr. George Moore. All the lectures and discussions will commence at 1 p.m. The first will be a discussion of "The Souls of Black Folk," by W.E.B. DuBois on Feb. 27, while the second, funded also by the commission, will be a lecture and discussion of Richard Wright's "Native Son." The final class will be a lecture and discussion of James Baldwin's "Notes of a Native Son," and Dr. Martin Luther King Jr.'s "Letter From Birmingham Jail," on March 13.

To register for the series, call the library's Circulation Desk at 450-3434. Books are available for the first lecture, also at the circulation desk.

In addition, the Martin Luther King Jr. Commemorative Commission had funded the Annual Dr. Martin Luther King Jr. lecture, a match for the program "Stand Up and Be Counted," the lecture by Giles Wright on Afro-Americans in New Jersey, and the film showings of "King: Montgomery to Memphis," and "That's Black Entertainment." The library has also done outreach programs on Dr. King and the Black Cowboy at School Number Nine. Dr. George Moore received his Ph.D. from Boston College and has taught at New York University, Rutgers University, Barnard College, and at Hunter College. He has written books of poetry and is completing a novel, "Tombstone International," which is being promoted by literary agents in New York City.

Historian to speak

Bob McFadyen, well-known Belleville historian, will deliver a lecture on the history of Belleville for the Second Annual American History lecture at the Belleville Public Library and Information Center, Feb. 21 at 7:30 p.m. Call the library at 450-3434 to register for the lecture.

Library best sellers

Try the Belleville Public Library and Information Center, if you are looking for a best seller. Among the titles are "The Secret Pilgrim," by John Le Carre, "The Plains of Passage," by Jean M. Auel, "Cold Fire," by Dean R. Koontz, "Dazzle," by Judith Krantz, "The Witching Hour," by Anne Rice, "Four Past Midnight," by Stephen King, "Jurassic Park," by Michael Crichton, "Battleground," by W.E.B. Griffin, "Vital Signs," by Robin Cook, "Memories of Midnight," by Sidney Sheldon, "The Burden of Proof," by Scott Turow, "The Fourth K," by Mario Puzo, "Circle of Friends," by Maeve Binchy, and "Oh, The Places You'll Go," by Dr. Seuss.

If the book is not in, the Circulation Desk staff will be happy to put the book on reserve for you.

LENTEN SCRIPTURE STUDIES

"THE MIRACLES OF JESUS"



Presented By:

Rev. Arthur J. Serratelli

Assoc. Professor of Biblical Studies
Immaculate Conception Seminary
South Orange, N.J.

THURSDAYS

FEB. 21 thru MAR. 21

7:30 p.m. to 9 p.m.

All Are Invited.

St. Joseph's Hall

HOLY FAMILY CHURCH

28 Brookline Avenue

NUTLEY ★ 667-0026

"The Parish That Is A Family!"

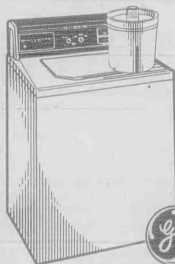
EIGHT CICCOLINI BROS. PRESENTS:



120 DAYS SAME AS CASH!

From February 17 thru March 1, 1991

No payments required. Come in for details. GECAF®



GE X/Large Capacity 2-in-1 WASHER

Model WWA8800

8 cycles, 2 speeds. Mini-Basket tub for small loads. 4 water levels, 3 wash rinse temperature combinations.



GE Upright Freezer

Model CAS

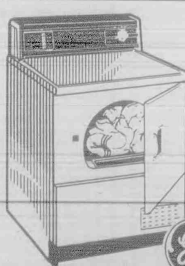
4.8 cu. ft. capacity upright freezer. 2 full-width cabinet shelves, 3 door shelves. Adjustable temperature control.



GE Upright Freezer

Model CAB

Warm temperature indicator light. Adjustable temperature control. 5 refrigerated shelves including top cold plate for fast freezing.



GE Large Capacity 5-Cycle GAS DRYER

Model DDG7288

Automatic dry control dryer. 5 cycles including Automatic Permanent Press. 4 drying selections. Removable up-front lint filter.

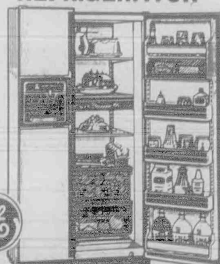
GE 18.2 Cu. Ft. Capacity REFRIGERATOR



Model TBX18D

18.2 cu. ft. capacity; 5.14 cu. ft. freezer. Drop-thru meat pan. Deep door holds 6-packs. Equipped for optional icemaker.

GE Ice/Water Dispenser REFRIGERATOR



Model TFX24

23.6 cu. ft. capacity; 8.65 cu. ft. freezer. Automatic energy saver system. Dispenses crushed ice, cubes or water. Adjustable glass shelves. Textured doors.

the eight ciccolini bros. inc.
537 Franklin Avenue • Nutley
201-661-2100

William McCoy, 77

William McCoy, 77, formerly of Belleville, died Feb. 9 in his Manchester Township home.

A Mass was offered Feb. 13 in St. John's Church, Lakehurst, following the funeral from the Quinn-Hopping Funeral Home, Toms River.

Mr. McCoy had been an electrical technician for Western Electric in Kearny for many years before retiring in 1978.

He was a member of the Western Electric Club of Kearny and the Stanley Holmes Chapter of Telephone Pioneers of America of Toms River.

Mrs. Maria Segrave

A Mass for Mrs. Maria Segrave, formerly of Belleville, was offered Feb. 11 in St. Thomas the Apostle Church, Bloomfield, following the funeral from Frank Halpin's Brookdale Funeral Home, Bloomfield.

Mrs. Segrave died Feb. 6 in the St. Barnabas Medical Center, Livingston.

Also, the Knights of Columbus of St. Peter's Church of Belleville, the Ocean County Polish Club of Manchester and the Manchester Seniors of Whitting.

Mr. McCoy served in the Army during World War II.

Born in Jersey City, he lived in Belleville before moving to Manchester 11 years ago.

Surviving are his wife, Natalie; four daughters, Mrs. Kathleen Romano, Mrs. Maria Gemitis, Mrs. Patricia Devan and Mrs. Ann Rust; a sister, Mrs. Rose Ricca, and eight grandchildren.

She was an insurance clerk for the Prudential Insurance Co. in Newark for 13 years before retiring 20 years ago.

Born in Newark, she lived in Belleville before moving to Nutley 12 years ago.

Surviving are a son, Richard B. Jr., and a sister, Mrs. Rose Schuren.

OBITUARIES

Molly Rossetti, 74

Miss Molly Rossetti, 74, formerly of Belleville, died Feb. 7 in the Clara Maass Medical Center, Belleville.

A Mass was offered Feb. 9 in St. Peter's Church, Belleville, after the funeral from the S.W. Brown & Son Funeral Home, Nutley.

Miss Rossetti was a bookkeeper for the Real Fit Dress Co., Newark, for 30 years before retiring nine years ago.

Frank Larkin, 64

Frank Larkin, 64, formerly of Belleville, died Feb. 7 in Beth Israel Hospital, New York City.

A Mass was offered Feb. 9 in St. Peter's Church, Belleville, after the funeral from the Kierman Funeral Home, Belleville.

Mr. Larkin was a registered nurse and a professor at the Phillips Beth Israel School of Nursing, New York City, for many years.

He earned a bachelor's degree from Seton Hall University and a master's degree from Columbia University.

Mr. Larkin was a Navy veteran of World War II.

Born in Belleville, he moved to New York City 30 years ago.

He is survived by a sister, Mrs. Frances Dacey.

She was a member of the Rotondo Association of Newark and the Women's Auxiliary of St. Philip of Neri Church, Newark.

Born in Newark, she lived in Belleville before moving to Bloomfield three years ago.

Surviving are three sister, Mrs. Jennie Melchione, Mrs. Anna Gary and Mrs. Marie Duva, and a brother, Carmen.

Agnes Quirk, 52

Dr. Zrike, who received his doctorate from New York University, worked for Hoffman-LaRoche for 35 years before retiring 21 years ago.

He died Feb. 10 in Mount Sinai Hospital, Glen Ridge.

Dr. Zrike, who received his doctorate from New York University, worked for Hoffman-LaRoche for 35 years before retiring 21 years ago.

He died Feb. 10 in Mount Sinai Hospital, Glen Ridge.

Dr. Zrike, who received his doctorate from New York University, worked for Hoffman-LaRoche for 35 years before retiring 21 years ago.

He died Feb. 10 in Mount Sinai Hospital, Glen Ridge.

Dr. Zrike, who received his doctorate from New York University, worked for Hoffman-LaRoche for 35 years before retiring 21 years ago.

He died Feb. 10 in Mount Sinai Hospital, Glen Ridge.

Dr. Zrike, who received his doctorate from New York University, worked for Hoffman-LaRoche for 35 years before retiring 21 years ago.

He died Feb. 10 in Mount Sinai Hospital, Glen Ridge.

Dr. Zrike, who received his doctorate from New York University, worked for Hoffman-LaRoche for 35 years before retiring 21 years ago.

He died Feb. 10 in Mount Sinai Hospital, Glen Ridge.

Dr. Zrike, who received his doctorate from New York University, worked for Hoffman-LaRoche for 35 years before retiring 21 years ago.

He died Feb. 10 in Mount Sinai Hospital, Glen Ridge.

Dr. Zrike, who received his doctorate from New York University, worked for Hoffman-LaRoche for 35 years before retiring 21 years ago.

He died Feb. 10 in Mount Sinai Hospital, Glen Ridge.

Dr. Zrike, who received his doctorate from New York University, worked for Hoffman-LaRoche for 35 years before retiring 21 years ago.

He died Feb. 10 in Mount Sinai Hospital, Glen Ridge.

Dr. Zrike, who received his doctorate from New York University, worked for Hoffman-LaRoche for 35 years before retiring 21 years ago.

He died Feb. 10 in Mount Sinai Hospital, Glen Ridge.

Dr. Zrike, who received his doctorate from New York University, worked for Hoffman-LaRoche for 35 years before retiring 21 years ago.

He died Feb. 10 in Mount Sinai Hospital, Glen Ridge.

Dr. Zrike, who received his doctorate from New York University, worked for Hoffman-LaRoche for 35 years before retiring 21 years ago.

He died Feb. 10 in Mount Sinai Hospital, Glen Ridge.

Dr. Zrike, who received his doctorate from New York University, worked for Hoffman-LaRoche for 35 years before retiring 21 years ago.

He died Feb. 10 in Mount Sinai Hospital, Glen Ridge.

Dr. Zrike, who received his doctorate from New York University, worked for Hoffman-LaRoche for 35 years before retiring 21 years ago.

He died Feb. 10 in Mount Sinai Hospital, Glen Ridge.

Dr. Zrike, who received his doctorate from New York University, worked for Hoffman-LaRoche for 35 years before retiring 21 years ago.

He died Feb. 10 in Mount Sinai Hospital, Glen Ridge.

Dr. Zrike, who received his doctorate from New York University, worked for Hoffman-LaRoche for 35 years before retiring 21 years ago.

He died Feb. 10 in Mount Sinai Hospital, Glen Ridge.

Dr. Zrike, who received his doctorate from New York University, worked for Hoffman-LaRoche for 35 years before retiring 21 years ago.

He died Feb. 10 in Mount Sinai Hospital, Glen Ridge.

Dr. Zrike, who received his doctorate from New York University, worked for Hoffman-LaRoche for 35 years before retiring 21 years ago.

He died Feb. 10 in Mount Sinai Hospital, Glen Ridge.

Dr. Zrike, who received his doctorate from New York University, worked for Hoffman-LaRoche for 35 years before retiring 21 years ago.

He died Feb. 10 in Mount Sinai Hospital, Glen Ridge.

Dr. Zrike, who received his doctorate from New York University, worked for Hoffman-LaRoche for 35 years before retiring 21 years ago.

He died Feb. 10 in Mount Sinai Hospital, Glen Ridge.

Ernest Barron, 82

Services for Ernest Barron, 82, of Belleville were held Feb. 11 in the Pettit-Davis Funeral Home, Rahway.

Mr. Barron died Feb. 7 in the Clara Maass Medical Center, Belleville.

He was a paint sprayer for the IT & T Corp., Nutley, for 31 years before retiring in 1973. Mr. Barron

was a member of the Retirees Club and the Bowling Team of IT & T.

Born in Canada, he lived in Lowell, Mass., New York City and Newark before moving to Belleville 37 years ago.

Surviving are his wife, Clara; a daughter, Mrs. Isabelle Goshak; seven grandchildren and eight great-grandchildren.

Dr. Edward Zrike, 83

A Mass for Dr. Edward, 83, of Belleville, who had been a chemical engineer for Hoffman-LaRoche in Nutley, was offered Feb. 13 in St. Peter's Church, Belleville, after the funeral from the Kierman Funeral Home, Belleville.

He died Feb. 10 in Mount Sinai Hospital, Glen Ridge.

Dr. Zrike, who received his doctorate from New York University, worked for Hoffman-LaRoche for 35 years before retiring 21 years ago.

He died Feb. 10 in Mount Sinai Hospital, Glen Ridge.

Dr. Zrike, who received his doctorate from New York University, worked for Hoffman-LaRoche for 35 years before retiring 21 years ago.

He died Feb. 10 in Mount Sinai Hospital, Glen Ridge.

Dr. Zrike, who received his doctorate from New York University, worked for Hoffman-LaRoche for 35 years before retiring 21 years ago.

He died Feb. 10 in Mount Sinai Hospital, Glen Ridge.

Dr. Zrike, who received his doctorate from New York University, worked for Hoffman-LaRoche for 35 years before retiring 21 years ago.

He died Feb. 10 in Mount Sinai Hospital, Glen Ridge.

Dr. Zrike, who received his doctorate from New York University, worked for Hoffman-LaRoche for 35 years before retiring 21 years ago.

He died Feb. 10 in Mount Sinai Hospital, Glen Ridge.

Dr. Zrike, who received his doctorate from New York University, worked for Hoffman-LaRoche for 35 years before retiring 21 years ago.

He died Feb. 10 in Mount Sinai Hospital, Glen Ridge.

Dr. Zrike, who received his doctorate from New York University, worked for Hoffman-LaRoche for 35 years before retiring 21 years ago.

He died Feb. 10 in Mount Sinai Hospital, Glen Ridge.

Dr. Zrike, who received his doctorate from New York University, worked for Hoffman-LaRoche for 35 years before retiring 21 years ago.

He died Feb. 10 in Mount Sinai Hospital, Glen Ridge.

Dr. Zrike, who received his doctorate from New York University, worked for Hoffman-LaRoche for 35 years before retiring 21 years ago.

He died Feb. 10 in Mount Sinai Hospital, Glen Ridge.

Dr. Zrike, who received his doctorate from New York University, worked for Hoffman-LaRoche for 35 years before retiring 21 years ago.

He died Feb. 10 in Mount Sinai Hospital, Glen Ridge.

Dr. Zrike, who received his doctorate from New York University, worked for Hoffman-LaRoche for 35 years before retiring 21 years ago.

He died Feb. 10 in Mount Sinai Hospital, Glen Ridge.

Dr. Zrike, who received his doctorate from New York University, worked for Hoffman-LaRoche for 35 years before retiring 21 years ago.

He died Feb. 10 in Mount Sinai Hospital, Glen Ridge.

Dr. Zrike, who received his doctorate from New York University, worked for Hoffman-LaRoche for 35 years before retiring 21 years ago.

He died Feb. 10 in Mount Sinai Hospital, Glen Ridge.

Dr. Zrike, who received his doctorate from New York University, worked for Hoffman-LaRoche for 35 years before retiring 21 years ago.

He died Feb. 10 in Mount Sinai Hospital, Glen Ridge.

Dr. Zrike, who received his doctorate from New York University, worked for Hoffman-LaRoche for 35 years before retiring 21 years ago.

He died Feb. 10 in Mount Sinai Hospital, Glen Ridge.

Dr. Zrike, who received his doctorate from New York University, worked for Hoffman-LaRoche for 35 years before retiring 21 years ago.

He died Feb. 10 in Mount Sinai Hospital, Glen Ridge.

Dr. Zrike, who received his doctorate from New York University, worked for Hoffman-LaRoche for 35 years before retiring 21 years ago.

He died Feb. 10 in Mount Sinai Hospital, Glen Ridge.

Dr. Zrike, who received his doctorate from New York University, worked for Hoffman-LaRoche for 35 years before retiring 21 years ago.

He died Feb. 10 in Mount Sinai Hospital, Glen Ridge.

Dr. Zrike, who received his doctorate from New York University, worked for Hoffman-LaRoche for 35 years before retiring 21 years ago.

He died Feb. 10 in Mount Sinai Hospital, Glen Ridge.

Dr. Zrike, who received his doctorate from New York University, worked for Hoffman-LaRoche for 35 years before retiring 21 years ago.

He died Feb. 10 in Mount Sinai Hospital, Glen Ridge.

A Mass for Dr. Edward, 83, of Belleville, who had been a chemical engineer for Hoffman-LaRoche in Nutley, was offered Feb. 13 in St. Peter's Church, Belleville, after the funeral from the Kierman Funeral Home, Belleville.

He died Feb. 10 in Mount Sinai Hospital, Glen Ridge.

Dr. Zrike, who received his doctorate from New York University, worked for Hoffman-LaRoche for 35 years before retiring 21 years ago.

He died Feb. 10 in Mount Sinai Hospital, Glen Ridge.

Dr. Zrike, who received his doctorate from New York University, worked for Hoffman-LaRoche for 35 years before retiring 21 years ago.

He died Feb. 10 in Mount Sinai Hospital, Glen Ridge.

Dr. Zrike, who received his doctorate from New York University, worked for Hoffman-LaRoche for 35 years before retiring 21 years ago.

He died Feb. 10 in Mount Sinai Hospital, Glen Ridge.

Dr. Zrike, who received his doctorate from New York University, worked for Hoffman-LaRoche for 35 years before retiring 21 years ago.

He died Feb. 10 in Mount Sinai Hospital, Glen Ridge.

Dr. Zrike, who received his doctorate from New York University, worked for Hoffman-LaRoche for 35 years before retiring 21 years ago.

He died Feb. 10 in Mount Sinai Hospital, Glen Ridge.

Dr. Zrike, who received his doctorate from New York University, worked for Hoffman-LaRoche for 35 years before retiring 21 years ago.

He died Feb. 10 in Mount Sinai Hospital, Glen Ridge.

Dr. Zrike, who received his doctorate from New York University, worked for Hoffman-LaRoche for 35 years before retiring 21 years ago.

He died Feb. 10 in Mount Sinai Hospital, Glen Ridge.

Dr. Zrike, who received his doctorate from New York University, worked for Hoffman-LaRoche for 35 years before retiring 21 years ago.

He died Feb. 10 in Mount Sinai Hospital, Glen Ridge.

Dr. Zrike, who received his doctorate from New York University, worked for Hoffman-LaRoche for 35 years before retiring 21 years ago.

He died Feb. 10 in Mount Sinai Hospital, Glen Ridge.

Dr. Zrike, who received his doctorate from New York University, worked for Hoffman-LaRoche for 35 years before retiring 21 years ago.

He died Feb. 10 in Mount Sinai Hospital, Glen Ridge.

Dr. Zrike, who received his doctorate from New York University, worked for Hoffman-LaRoche for 35 years before retiring 21 years ago.

He died Feb. 10 in Mount Sinai Hospital, Glen Ridge.

Dr. Zrike, who received his doctorate from New York University, worked for Hoffman-LaRoche for 35 years before retiring 21 years ago.

He died Feb. 10 in Mount Sinai Hospital, Glen Ridge.

Dr. Zrike, who received his doctorate from New York University, worked for Hoffman-LaRoche for 35 years before retiring 21 years ago.

He died Feb. 10 in Mount Sinai Hospital, Glen Ridge.

Dr. Zrike, who received his doctorate from New York University, worked for Hoffman-LaRoche for 35 years before retiring 21 years ago.

He died Feb. 10 in Mount Sinai Hospital, Glen Ridge.

Dr. Zrike, who received his doctorate from New York University, worked for Hoffman-LaRoche for 35 years before retiring 21 years ago.

He died Feb. 10 in Mount Sinai Hospital, Glen Ridge.

Dr. Zrike, who received his doctorate from New York University, worked for Hoffman-LaRoche for 35 years before retiring 21 years ago.

He died Feb. 10 in Mount Sinai Hospital, Glen Ridge.

Dr. Zrike, who received his doctorate from New York University, worked for Hoffman-LaRoche for 35 years before retiring 21 years ago.

He died Feb. 10 in Mount Sinai Hospital, Glen Ridge.

Dr. Zrike, who received his doctorate from New York University, worked for Hoffman-LaRoche for 35 years before retiring 21 years ago.

He died Feb. 10 in Mount Sinai Hospital, Glen Ridge.

Dr. Zrike, who received his doctorate from New York University, worked for Hoffman-LaRoche for 35 years before retiring 21 years ago.

He died Feb. 10 in Mount Sinai Hospital, Glen Ridge.

Dr. Zrike, who received his doctorate from New York University, worked for Hoffman-LaRoche for 35 years before retiring 21 years ago.

He died Feb. 10 in Mount Sinai Hospital, Glen Ridge.

WILLIE'S

Diner - Restaurant

Try Our Delicious Salad Bar 11 a.m. - 10 p.m.

Italian Specialties Steaks & Chops

Homemade Pastries • All Baking Done On Premises

CHILDREN'S MENU AVAILABLE

Complete Dinner Menu & Ala Carte

Special Breakfast Menu 6 a.m. - 11 a.m.

Daily Businessman's Lunch 11 a.m. - 3 p.m.

OPEN 24 HOURS - 7 DAYS

9 State St. Bloomfield • 748-7414

Professional Service Directory

Podiatrists

Dr. Marykate Noonan Doyle
Surgeon Podiatrist
Foot and Ankle Specialist
272 Holmes Street
BELLEVILLE
Call for Appt.
(201) 450-4070
Medicare and HMO Participating Physicians

Dr. Nicholas Pellicoro
Surgeon Podiatrist
FOOT SPECIALIST
526 Franklin Avenue
Nutley
667-1066
Medicare Participating Physician

Dentists

Dial "NO PAINO" (667-2466)

Smile Today
J. D. Muglia D.D.S., F.A.C.D., F.A.C.P.
10 Franklin Ave
Nutley, NJ
24 Hr. Emergency Service

Cosmetic & Restorative Dentistry

Dentists

Vincent J. Lipoma D.M.D.
General Dentistry
30 HUCK ROAD
BLOOMFIELD, N.J.
338-1120
Evening and Saturday Hours Available

Attorneys

Deborah C. Peck
ATTORNEY AT LAW
General Practice:
• Matrimonial • Bankruptcy
• Wills • Accidents
FREE CONSULTATION
CLIFTON EXECUTIVE PLAZA
1200 ROUTE 46 WEST
CLIFTON, N.J. 471-1855

Chiropractors

Dr. Robert J. LaBruzza
CHIROPRACTOR
• Auto Related Injuries
• Work Related Injuries
• Occupational Stress
• Back, Neck, Arm and Leg Pain
• Sports Related Injuries
• Permanent Impairment and Disability Evaluations
3 Edgewood Road
Bloomfield 429-2235
(Two blocks behind Bloomingdale High School)

DR. RALPH J. DI MAIO
CHIROPRACTOR
Serving your community for over 11 years
Most insurances provide coverage.
751-8805
625 Jerusalem St., Belleville

This Space Is Available For Your Professional Advertisement

Obstetrics / Gynecology

NUTLEY - KEARNY
OBSTETRICS - GYNECOLOGY
HOWARD GRODER, M.D.
JEFFREY ROSEN, M.D.
HIGH RISK PREGNANCY
INFERTILITY

Nutley Medical Plaza
181 Franklin Avenue
Nutley, N.J. 07110
667-2212

Arlington Medical Building
837 Kearny Avenue
Kearny, N.J. 07032
991-1519

"Serving The Community For 40 Years"

Orechio bill clears Assembly

The Assembly has approved and sent to the governor a bill sponsored by Senator Carmine A. Orechio (D-30th) to require smoke detectors in all single- and double-family dwellings built before 1977.

The bill, S.1968, passed the Assembly 60-6 Jan. 31.

"This bill is important because it includes a substantial number of residents who live in older homes in the fire-safety provisions enacted by the State Fire Safety Commission," said Orechio, who chairs the Fire Safety Committee.

"These homes are often in even greater need of smoke alarms because they are more susceptible to fire."

Existing law requires one- and two-family homes built after Jan. 1, 1977, to be equipped with smoke detectors, he noted.

The bill would require smoke detectors on each level of the house and in the vicinity of bedrooms. The home could not be sold unless the safety measures were in place.

Failure to comply would bring a \$500 penalty and subject violators to fines under the state Uniform Fire Safety Act.

A second offense would bring a penalty of \$2,000.

The Assembly Housing Committee unanimously endorsed the measure in November.

The Senate passed the bill 34-1 in October.

Irvin Cozzarelli Memorial Home

"IN YOUR TIME OF NEED
"A Family Name You Can Trust"

James A. Cozzarelli, Jr.
276 Washington Avenue
BELLEVILLE
759-1114

NOTE: Beta Blockers may also be used to lower blood pressure.

"This bill is important because it includes a substantial number of residents who live in older homes in the fire-safety provisions enacted by the State Fire Safety Commission," said Orechio, who chairs the Fire Safety Committee.

"These homes are often in even greater need of smoke alarms because

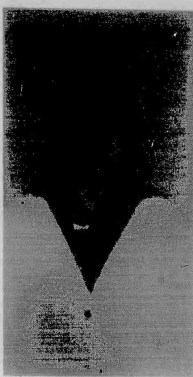
Slattery selected Key Club lieutenant governor

By Gina Del Guercio
On Tuesday, January 29, Tara Slattery a sophomore at Belleville High School attended West Caldwell High School to run for Key Club Lieutenant Governor of our district (district 13).

Slattery's decision to run for Lieutenant Governor was last minute. She just barely had five days to prepare her opening speech and to locate some of her literature needed for this project. With the help of Melasie Bonacors, who is the president of the Key Club at BHS, Slattery was able to find out more information about the Key Club and write her remarkable speech.

At the presentation, Slattery was nominated third, and therefore was the third person to present her opening speech. At the conclusion of her speech, Slattery was asked various questions. When someone inquired about the yellow ribbon pinned on her outfit, Slattery replied by saying, "I have pride in the soldiers in the Persian Gulf, and I believe in them, just as I have pride in the Key Club, and believe I can do something for it." Slattery also regarded the club as "my favorite club! It is very important to me!"

Slattery lost to Adam Balkin, a student from Livingston High School, but the judges were so impressed by her speech that at a Key Club trip to Paradise Park recently, Slattery was offered the same position for a different district (district 15). In order to obtain this position, Slattery will have to be appointed by the Lieutenant Governor of the state.



Tara Slattery

Best awarded Bausch & Lomb scholarship

By Colleen Coppia

Jennifer Best, a senior at Belleville High School, was named winner of the annual Bausch & Lomb Science award. The science award, will be presented to Best at Belleville High School's Scholastic Awards Dinner in May. The award is presented each year to winners at approximately 5,500 participating

Belleville High School News

Loiacono awarded Berkeley scholarship

By Tom Pontrella

There comes a time in life when seniors in high school must make certain decisions pertaining to their future. This is especially true for Anna Marie Loiacono, who is blessed with an array of talents.

Just recently, Loiacono was awarded a \$5,400 scholarship toward her 18-month Business Administration program at Berkeley College in West Paterson. By recording the fourth highest score on a three part English test, The Berkeley College Alumni Association gave Anna Marie a scholarship toward her tuition. She will begin her schooling in the fall of 1991 and graduate in the spring of 1993.

An Orechio Publication

Thursday, February 14, 1991

Belleville Times—9

BHS chorus students enjoy Broadway

By Cyndee Rodriguez

"What an unbelievable experience!" "It was worth every penny!" "The music and lyrics are outrageous!" These are just a few of the comments made by chorus students, teachers and parents, who, on Wednesday, January 16th, attended a trip to New York City to see the Broadway production of Les Miserables.

The trip, which was planned in December at a relatively low cost group rate of \$32.50 each, was attended by chorus students and

Dr. Finetti, Mrs. Richter, parents and BHS principal Joseph Ciccone.

The play itself was a spectacular production, with elaborate costumes, and intelligent staging and true professionalism. When asked what she thought about the play, junior Chris Alfaro commented, "It was a good heavy drama. It showed the goodness in a man everyone believed to be bad." Sophomore Michelle Capriglione found it emotionally touching and was delighted with the play.



The Belleville High School News is a feature of the Belleville Times. It runs weekly, space allowing.

All stories are written by the students of Mr. Anthony Sales's journalism class. Their work is coordinated by student editor Denise Zecca.

Spencer's Strength is in Service and Safety.

Built on a Solid Reputation
You can Bank On!

Over \$840 Million
in Financial Strength
You can Count On!

STATEMENT OF CONDITION December 31, 1990

ASSETS		LIABILITIES AND RETAINED EARNINGS	
Cash on Hand & in Banks	\$ 18,983,418.00	Members' Savings	\$765,232,632.00
Federal Funds Sold	77,175,000.00	Taxes & Insurance Paid in Advance	4,738,064.00
Investment Securities, Net	7,547,077.00	Other Liabilities	5,820,847.00
Loans Receivable, Net	691,678,521.00	TOTAL LIABILITIES	\$775,791,543.00
Mortgage Backed Securities, Net	22,555,801.00	Retained Earnings	\$ 66,828,961.00
Real Estate Owned	3,270,513.00	TOTAL LIABILITIES AND RETAINED EARNINGS	\$842,620,504.00
Premises & Equipment, Net	6,226,310.00		
Federal Home Loan Bank Stock	7,017,900.00		
Other Assets	8,165,964.00		
TOTAL ASSETS	\$842,620,504.00		

TOTAL REGULATORY CAPITAL

	(000)	TOTAL TANGIBLE CAPITAL (000)
Capital as defined by generally accepted accounting principles	\$66,829	\$66,829
General loan loss allowance	(5,268)	(5,268)
Goodwill	(5,636)	(5,636)
Investment in subsidiaries to be deducted from capital	(182)	(182)
Total regulatory capital	\$66,279	
Total tangible capital		61,011
Tangible capital requirement		12,554
Excess capital over tangible capital requirement		\$48,457

Regulatory capital is the basis by which the office of Thrift Supervision determines whether a savings association is solvent, and whether a savings association is meeting its regulatory capital requirement.

OFFICERS	ASSISTANT VICE PRESIDENTS	ASSISTANT TREASURERS	DIRECTORS
Nicholas Lorusso President	Pauline Gonasko	Florence Manzetti	Charles Duesse, Chairman
Jose B. Guerrero	Nancy Steinhilber	Gladys Dezel	Dr. Everett E. Kurnet
Executive Vice President	Albert Bull	Theresa Gugliotti	Eugene Fontana
Frank P. Orfino	Anne L. Aselin	Kathleen Cybulsky	Allen Mecca
Vice President/Treasurer	Jeffrey Coleman	Sandra Lorusso	Frank Greco
Douglas Duesse	Martha Padilla	Katherine Kelly	Nicholas Lorusso
Vice President	Aida Garcia	Catherine Bazzano	
Helen Germain		Constance Lubal	COUNSEL
Secretary		Maria Martins	Jones & Jones, Esqs.
		Elaine Quass	INTERNAL AUDITOR
		Rosa Santos	Paul Ciento
		Christina Villa	AUDITORS
		Bernadette Henninger	Stephen P. Radics & Co.

Spencer Savings Bank

GARFIELD • LODI • WALLINGTON • SADDLE BROOK • CLIFTON • LYNDHURST • BELLEVILLE • ELIZABETH • UNION
MAIN PHONE NUMBER • 772-6700

Spencer is Solid on Service.

FDIC Insured

Stafford Tire Center

DUNLOP • TOYO • GOODYEAR
4-WHEEL ALIGNMENT SERVICE

FREE
Rotating &
Tire Disposal
With Tire Purchase
With Coupon • Expires 5-15-91

FREE
Mounting &
Valve
With Tire Purchase
With Coupon • Expires 5-15-91

FREE
High-Speed
Balancing
With Tire Purchase
With Coupon • Expires 5-15-91

FREE
Flat Repair
With Coupon • Expires 5-15-91

\$20 OFF Any Set
Of 4 Tires
\$10 OFF Any Pair
Of Tires
With Coupon • Expires 5-15-91

\$10 OFF
Front End Wheel
Alignment
With Coupon • Expires 5-15-91

FREE
Tire
Rotation
(every 5,000 miles)
With Coupon • Expires 5-15-91

CALL FOR PRICES ON TIRES

552 Route 3 West
CLIFTON

779-0726

THE SALE YOU HAVE BEEN WAITING FOR!

As Seen on TV!

1/2 PRICE SALE!
on the
MAACO SUPREME PAINT SERVICE

Reg. \$399.95
FOR ONLY **\$199.00**

Not good with any other offer. Rust and bodywork extra. Vans & Trucks slightly higher.

Hot gas with any other offer. Rust and bodywork extra. Vans & Trucks slightly higher.

Hot gas with any other offer. Rust and bodywork extra. Vans & Trucks slightly higher.

Hot gas with any other offer. Rust and bodywork extra. Vans & Trucks slightly higher.

Hot gas with any other offer. Rust and bodywork extra. Vans & Trucks slightly higher.

Hot gas with any other offer. Rust and bodywork extra. Vans & Trucks slightly higher.

Hot gas with any other offer. Rust and bodywork extra. Vans & Trucks slightly higher.

Hot gas with any other offer. Rust and bodywork extra. Vans & Trucks slightly higher.

Hot gas with any other offer. Rust and bodywork extra. Vans & Trucks slightly higher.

Hot gas with any other offer. Rust and bodywork extra. Vans & Trucks slightly higher.

Hot gas with any other offer. Rust and bodywork extra. Vans & Trucks slightly higher.

Hot gas with any other offer. Rust and bodywork extra. Vans & Trucks slightly higher.

Hot gas with any other offer. Rust and bodywork extra. Vans & Trucks slightly higher.

Hot gas with any other offer. Rust and bodywork extra. Vans & Trucks slightly higher.

Hot gas with any other offer. Rust and bodywork extra. Vans & Trucks slightly higher.

Hot gas with any other offer. Rust and bodywork extra. Vans & Trucks slightly higher.

Hot gas with any other offer. Rust and bodywork extra. Vans & Trucks slightly higher.

Hot gas with any other offer. Rust and bodywork extra. Vans & Trucks slightly higher.

Hot gas with any other offer. Rust and bodywork extra. Vans & Trucks slightly higher.

Hot gas with any other offer. Rust and bodywork extra. Vans & Trucks slightly higher.

Hot gas with any other offer. Rust and bodywork extra. Vans & Trucks slightly higher.



With this coupon

WE BUY OIL
CONVERTED TO GAS?
WE SPECIALIZE IN FUEL
OIL TANK CLOSURES
647-9297
ANCO TANK & PUMP

Regal Carpet

Wholesalers

Family Owned and Operated Since 1957

Plush DuPont Certified

STAINMASTER

ONLY \$12.99

Per Sq. Yd. Installed

Call Today for Free Estimate

1-800-851-1299

1-800-851-1299

1-800-851-1299

1-800-851-1299

1-800-851-1299

1-800-851-1299

NUTLEY 1-800-287-5522

Behind 67 East Centre Street
Between Washington Ave. & River Rd.

MAACO Auto Painting & Bodyworks are independent franchisees of MAACO Auto Enterprises, Inc. must be painted by 3/2/91

EVENTS IN THE AREA

Support groups...

Job Seekers of Belleville, a skill development and support group for unemployed, underemployed, first time entries into job market, 7:30 to 9:30 p.m. Wednesdays, Fewsmith Church, Union and Little streets. No fee. Refreshments. Call Dave at 450-1858 or the church 9:30 a.m. to noon at 759-6869.

Catastrophic illness support group, 6 to 7:30 p.m. first and third Tuesdays, The Hospice, 34 Label St., Montclair. Separate sessions for families and patients. For more information, call 783-7879.

New Jersey Chapter of NAAFA (National Association to Advance Fat Acceptance), social events, human rights information, monthly newsletter. For more information, write P.O. Box 110203, Nutley, 07110 or call 667-2957.

Overeaters Anonymous, self-help group for compulsive overeaters or people with eating disorders, 8 p.m. Tuesdays, Bethany Lutheran Church, New and Joralemon streets, Belleville. For more information, call 759-0770, 8 p.m. Wednesdays, Christ Church, Park and Bloomfield avenues (opposite Grand Union), Bloomfield. For more information, call 746-4658.

Living with Cancer, for cancer patients and their families, 7 to 9 p.m. third Wednesdays, Mountsinai Hospital, Montclair, 429-6140 or 429-6128.

Recovery Inc., a community mental health self-help group for persons who suffer from nervous symptoms and fears, 7:30 p.m. Wednesdays, Parks Dept., 44 Park Ave., Nutley. For free literature, call 766-7466.

Make Today Count, a support group for patients and families dealing with cancer and other life-threatening illnesses, 7 p.m. Mondays, Clara Maass Medical Center, Belleville, 450-2230.

UNHOOKED, for drug and alcohol abuse. Call 643-5050 noon to 7 p.m. Monday through Friday for New Jersey treatment referrals and substance abuse information. Confidential.

New Jersey POISON INFORMATION Education System hotline: 1-800-962-1253. NUIPIES is equipped with a computer system that contains information on drugs and chemicals involved in poisoning incidents and can give immediate instructions on what to do. If necessary, you will be referred to an emergency room or private physician.

SOCIAL SECURITY 24-hour toll free number, 1-800-2345-SSA (1-800-234-5772). Live operators on duty 7 a.m. to 7 p.m., Monday through Friday. After 7 p.m., between 7 a.m., weekends or holidays, leave your name and number and someone will call you back.

Cancer Response System, a toll-free answer line providing information on all aspects of cancer. 1-800-ACS-2345, 9 a.m. to 5 p.m. Monday through Friday.

New Jersey Eating Disorders Hotline, for anyone suffering with anorexia nervosa, bulimia or compulsive eating problems, 1-800-624-2268.

Teen hotline, a nationwide toll free hotline for homeless and troubled teens and families, 1-800-999-9999.

For singles only...

Social dancing, 7 to 11 p.m. every Friday, Nutley Italian-American Club, 642 Franklin Ave. For more information, call 284-0639 after 5 p.m.

Bethany O.N.E.S., for singles, widowed, divorced of all religions, 12:30 p.m. third Sunday, Bethany Presbyterian Church, corner High Street and W. Passaic Avenue, Bloomfield. \$5 or food item of equal value for buffet dinner, Feb. 17; IRS speaker on income tax. For more information, call 338-7692.

Young Adult Singles, first and third Tuesdays, Holy Family School, Brookline Ave., Nutley, 21 to 43. For information, call 751-2415 or 759-9194.

Essex County Chapter of Widows and Widowers, 8 p.m. second Tuesdays, Reflection Hall, Hillside. All ages. For more information and directions, call 751-3015.

New Jersey Moonrakers, for tall adults, 8 p.m. second Tuesdays, Meadowlands Hilton, 2 Harmon Plaza, Secaucus. Dancing and socializing following meeting. \$3. For more information, call 822-0362.

Meetings...

Nutley Chapter AARP, 1 p.m. Feb. 14, Parks and Recreation building, 44 Park Ave. Arlene French, director of volunteers at Clara Maass Medical Center, guest speaker.


Belleville Democratic Club, 8 p.m. Feb. 19, Little League fieldhouse. Guest speaker from Public Service. Public welcome. Refreshments.

Republican Club of Nutley, 8 p.m. Feb. 21, Community Room, Nutley Savings Bank. Speaker: Robert Siconolfi, executive director, New Jersey Office of Consumer Protection. Public invited.

Belleville-Nutley Chapter of Hadassah, 7:30 p.m. Feb. 25, Nutley Parks and Rec, 44 Park Ave. Discussion of current developments in Israel and America. Social hour.

Easterns Chapter Columbianettes, 8 p.m. Feb. 26, Bishop Twigger Council, Irvington.

Bloomfield Columbianettes, 7:30 p.m. Feb. 27, Knights of Columbus Council, 190 State St.



STOP SMOKING


AFTER ONE CONVENIENT SESSION!!

MOUNTAINSIDE HOSPITAL is pleased to sponsor the highly successful 2 1/2 hour Green Seminar, a Stop Smoking session that has been tested and proven in hospitals and major corporations since 1961. The GREEN SEMINAR combines safe, medically proven HYPNOSIS and Behavior Modification techniques to help you stop smoking and avoid gaining weight in just ONE convenient session. This relaxing hypnosis approach also minimizes withdrawal discomfort. The cost of the program is a very affordable \$65.00. This special group rate includes the 2 1/2 hour session, an audio cassette, a take-home workbook, and FREE repetitions of the seminar, if desired.

YOU MAY ATTEND THE FIRST 30 MINUTES OF THE SEMINAR AT NO CHARGE OR OBLIGATION TO SEE IF THE PROGRAM IS FOR YOU!!

TUES., FEB. 19 - 7:00 - 9:30 PM

MOUNTAINSIDE HOSPITAL
Glen Ridge/Montclair, NJ
CALL FOR RESERVATIONS - 429-6856



Ladies auxiliary, Stuart E. Edgar Post 493, VFW, Post Home, 271 Washington Ave., Nutley. Membership open.

Belleville Historical Society, 7:30 p.m. first Tuesday, Belleville Reformed Church, 171 Main St. Membership open.

Kingsland Trust, 8 p.m. second Wednesday, Kingsland Manor, 3 Kingsland St., Nutley.

Tri-County Camera Club, 8 p.m. Nutley Museum, 65 Church St. Open to the public unless otherwise indicated. Feb. 19: NJPC Interclub Photo Travel Competition.

Court Gratia 751, Catholic Daughters of the Americas, 8 p.m. Nutley Amvet Post 30, 184 Park Ave., Nutley. Business meeting first Monday, social third Monday. Feb. 18: social. Bring paper item for game. \$1 admission. Refreshments. Bring a friend. For information, call Erna Mastro at 667-4430.

Deborah League of Bloomfield, 8 p.m. second Tuesdays, Civic Center, 84 Broad St., first floor. Refreshments. Everyone welcome.

American Legion auxiliary Nutley unit 70, 8 p.m. second Monday, 45 Franklin Ave.

Essex County American Legion auxiliary, 8 p.m. second Thursday, 45 Franklin Ave., Nutley.

Essex Salon No. 8, Eight and Forty, 8 p.m. third Monday, 45 Franklin Ave., Nutley.

Ladies auxiliary, Youngster-Alden Jr. VFW Post 275, 7:30 p.m. second Wednesday, 17 Belleville Ave., Belleville. Membership open.

Nutley Junior Woman's Club, 8 p.m. first Monday, clubhouse, 216 Chestnut St. Open to women 18 to 35. For more information, call membership chairman Denise Pender at 235-1822.

Evening Membership Dept. of the Nutley Woman's Club, 8 p.m. second and fourth Thursdays, clubhouse, 216 Chestnut St. Women of all ages invited.

VFW Post 493, 8 p.m., 1st and 3rd Tuesdays, 271 Washington Ave., Nutley. Membership open.

ENJA-North Jersey Aniga Users Group, a non-profit computer users organization, 7:30 p.m. first Tuesday, American Legion Post 70, 45 Franklin Ave., Nutley. Demonstrations, small group seminars. Free. Coffee served.

Belleville Kiwanis Club, 6:30 p.m. Thursday, San Carlo Restaurant, Lyndhurst.

Essex Chapter, American Association of Medical Assistants, second Wednesdays, Doctors' Lecture Hall, Clara Maass Medical Center, 1 Franklin Ave., Belleville. For information, call 743-7686.

Ladies auxiliary, Post 711, VFW, 8 p.m. second Thursday, 369 Broughton Ave., Bloomfield. For membership information, call Helen Mooney at 338-8053.

VFW Post 711, 8 p.m. second and fourth Mondays, 369 Broughton Ave., Bloomfield. For membership information, call 338-4256 or 338-8404.

Belleville Lions Club, 12:15 p.m. second and fourth Thursdays, Forest Hill Field Club, Bloomfield. Call Dennis Mautone at 751-4100.

Junior Woman's Club of Belleville, 7:30 p.m. second Monday, 51 Rossmore Place. For women 18 to 35. For more information, call Terry at 759-8669.

Juniorettes Club of Belleville, 6 p.m. second Monday, 51 Rossmore Place. For girls 12 to 18. Members wanted. Call Terry at 450-4835.

Junior Woman's Club of Bloomfield, 8 p.m. second and fourth Tuesdays, September through June, Civic Center, 84 Broad St. Open to women 18 to 35. For more information, call Laura Curcio at 751-0614.

Bloomfield Kiwanis Club, 12:15 p.m. Thursday, Forest Hill Field Club, Belleville Ave., Bloomfield.

Nutley Speakers Club, 7:45 p.m. Thursdays, 6 Willow Place. New members welcome. For information, call 667-5473.

White Eagle Unit 448, American Legion Auxiliary, 8 p.m. fourth Tuesday, Essex Manor, 41 Broughton Ave., Bloomfield.

VFW Post 493 auxiliary, second Tuesdays, Post Home, 271 Washington Ave., Nutley. Membership open. Write to Stuart E. Edgar Post 493 Ladies Auxiliary, 376 Chestnut St., Nutley.

Belleville Old Guard, 9:30 a.m. second and fourth Tuesdays, Fewsmith Memorial Presbyterian Church, 444 Union Ave. Refreshments.

Woman's Club of Belleville, 7:30 p.m. third Monday Sept. to June, 51 Rossmore Place. Next meeting: Feb. 18.

Fairs, flea markets, rummage...

Flea market, crafts, etc. 9 a.m. to 5 p.m. Feb. 17, March 17, Sacred Heart Social Center, 655 Valleybrook Ave., Lyndhurst. Benefits to Sacred Heart School, 100 tables. For information, call 997-9535 or 991-4856.

Flea market, crafts, baseball cards, 9 a.m. to 5 p.m. Feb. 24, Bloomfield Middle School, 60 Huck Road. A Deborah Hospital fundraiser. For more information, call 997-9535.

Craft fair, 10 a.m. to 4 p.m. March 2, Brookdale School, 1230 Broad St., Bloomfield. 39 crafters, food. Sponsored by Home and School Association.

Charles F. Rilli, M.D.
announces the opening of his practice of

UROLOGY

at 256 Broad Street, Bloomfield, N.J. 07003
Medicare Assignment Participant - Insurance Accepted

Practice includes:

Prostate Cancer and Disease • Impotence • Infertility
Vasectomy • Urine and Bladder Control Problems
Kidney Stone Disintegration
Bladder and Kidney Infections and Disorders

EVENING AND SATURDAY APPOINTMENTS AVAILABLE
Bloomfield Harrison
(201) 743-4450 (201) 482-7070

Craft show and flea market, 9 a.m. to 4 p.m. March 2, 3, St. Clare's Parish Center, 69 Allwood Road, Clifton. For more information, call 777-390 or 779-1422.

Fundraisers...

Winter Wonderland dance, 8 p.m. to 1 a.m. Feb. 16, St. Peter's School, 152 William St., Belleville. Live band, beer, snacks, buffet, set-ups. BYOB. \$20. For tickets and information, call Michele at 751-6379, Carmella at 759-3889 or Rosemary at 481-1209.

Valentine dance, 8 p.m. Feb. 16, Bloomfield Knights of Columbia, 190 State St. \$20. Sit down meal, music, dancing. For tickets, call Rose Ruffalo at 743-8688.

Bus trip to Atlantic City, Feb. 20 to Claridge Casino. \$18 per person with \$7 in coins, \$3 in food, \$5 deferred. For reservations, call 470-3047 or 340-2975. Sponsored by St. Mary's Hospital Guild.

Luncheon, sponsored by Evening Membership Dept., Nutley Woman's Club, 11:30 a.m. to 1 p.m. Feb. 21, 216 Chestnut Street. Menu: baked ziti, sausage, meat balls, tossed salad, Italian bread, dessert, coffee. \$4.25. For reservations, call 667-7120 or 667-1161.

7th annual Champagne Brunch, sponsored by Historic Restoration Trust, 11:30 a.m. to 1:30 p.m. Feb. 24, The Palace at Kings Court, Lyndhurst. \$22 adults, \$16 children under 12. Proceeds to restoration of Kingsland Manor. Checks payable to Historic Restoration Trust should be sent to D.J. Eisenfeld, 51 Enclosure, Nutley, 07110.

Breakfast Our Way, all you can eat, 9 a.m. to noon, Feb. 24, Belleville Elks Lodge 1123, 254 Washington Ave. Adults, \$5; children under 12, \$3. Pancakes, eggs any style, bacon, Taylor ham, potatoes, coffee, tea, milk, juices.

Dinner fashion show, sponsored by Class of 1991, Nutley High School, 6:30 p.m. Feb. 28, The Cameo, Garfield. \$25. For tickets, call Joanne Armandino at 661-3312.

Card party to benefit Tommy John Zakrzewski, 8 p.m. Feb. 28, Nutley Woman's Club, 216 Chestnut St. \$5. For reservations, call 667-1120 or 667-7120. Sponsored by Evening Membership Dept.

Fish and chip dinner, sponsored by St. Mary's Rogai Society, March 1, St. Mary's Church, 17 Magr. Owens Place, Nutley, \$7.50. Take out available. Catered by Argyle of Kearny. For tickets, call 667-7034, 667-8698 or 235-1784. No tickets sold at the door.

Born to Shop, a dinner/shopping fund raising event sponsored by Community Mental Health Services for Belleville, Bloomfield and Nutley, 6:30 to 10:30 p.m. March 1, The Chandelier, Belleville. For tickets, call 450-3100.

Cocktail party, sponsored by Elks Handicapped Children's Committee to benefit Tommy John Fund, 2 to 6 p.m. March 3, Nutley Elks Lodge, 216 Chestnut St. \$10 includes two drinks, hors d'oeuvres, music, dancing. For tickets, call Frank at 667-7120.

Dance to benefit nursery school at Christ Church, 8 p.m. to midnight, March 8, Christ Church parish hall, Park and Bloomfield avenues, Bloomfield/Glen Ridge. \$20 includes professional DJ, dancing, food and beverages. Tickets at the door. For more information, call 482-5309.

Art exhibit and auction, 6:30 p.m. March 8, Fewsmith Memorial Presbyterian Church, Union Avenue, Belleville. Preview following auction at 7:30 p.m. \$3. Refreshments and lithograph to each guest. For tickets, call Mary Ann at 759-8313.

An Evening at the Hop, sponsored by N.J. Dystonia Medical Research Foundation, 6 p.m. March 10, The Hop, Willow St., Bloomfield. \$30 includes entertainment and food. Cash bar. For tickets and information, call 661-3978 or Joyce at 667-4957.

Annual spaghetti dinner, sponsored by Amvets Auxiliary Post 30, 2 to 6 p.m. March 10, 184 Park Ave., Nutley. Adults, \$6; children, \$3. For information, call Mary at 751-4417.

Breakfast, sponsored by Nutley Elks 1290, 9 a.m. to 1 p.m. March 17/24 Chestnut St. Pancakes or eggs with bacon. \$5 per person; \$4 senior citizens; \$3 children under 12.

Up and Away Treasure Tray, sponsored by Belleville School 8, 7 p.m. March 22, Branch Brook Manor, Belleville. Advance tickets only. \$20 includes 25 tickets, full dinner and dessert. For tickets, call Karen McGinley at 751-5311 or Julie Murnock at 450-8971.

10th annual dinner fashion show, sponsored by Spring Garden School PTA, 6:30 p.m. April 4, Fiesta, Woodridge. Fashions and beautiful ideas from Pancho Salon of Ridgewood. For tickets or more information, call Teri Tedesco at 661-3735 or Donna Cocco at 284-1282, 223.

Entertainment 1991 coupon books, Grace Church, Nutley, Call 25-1177; American Cancer Society, Call 736-7770; Men's Club, Congregation Ahavath Achim, Call 759-9394. St. Mary's Home and School Association, Call Debbie Mowad at 667-5081 or St. Mary's School at 667-0801.

(To be included in this column, items must reach us by 3 p.m. the Friday preceding publication. Sorry, no exceptions and no items taken over the phone. Limited to Belleville, Bloomfield, Nutley primarily. Other towns included only if space permits. No charge. Questions? Call Ilen Maguire at 667-2100. Mail to Orechio Publications, Events in the Area, 800 Bloomfield Ave., Nutley, 07110.)


After 23 Years...

DENTISTRY FOR CHILDREN, P.A.

Is Proud To Announce The
RELOCATION
Of Their Office To:

382 W. PASSAIC AVE.
BLOOMFIELD, NEW JERSEY

(Diagonally across from our old office and adjacent to Broadway Photo)



"Where Nutley
Clifton and
Bloomfield meet"

By Appointment
201-338-1388

Jack Budnick, D.D.S.
Philip Wasserman, D.D.S.
William B. Kuen, D.M.D., M.Sc., J.
Orthodontist

382 West Passaic Ave.
Bloomfield, N.J. 07003

Joey Cee appearing in 'Peter Pan' production

Former resident, "Joey Cee" Camarota, recently joined the national touring company of Peter Pan. The show celebrates its 35th



Joey Cee

anniversary, starting two-time gymnastic Olympian Cathy Rigby.

Joey, who has just finished a two and a half month engagement at Radio City Music Hall, auditioned for a role in Peter Pan and immediately went on the road. He plays the Never Bear and is the understudy for Michael Darling. The eight and a half month tour will take him to 17 states, including Florida, California and Hawaii. Nine year old Joey is a fourth grade student at Lynn Crest School in Colonia. Presently, he is tutored on the road. He started his acting career with a regional theatre group, Kids on Stage. He travels with his mother and later, will be joined by his dad, Anthony, a letter carrier in Bloomfield and his sister, Christine. He is the grandson of Mr. and Mrs. James Natale of Belleville.

Belleville Democrats install new slate of officers

At its first meeting of the new year, the Belleville Democratic Club swore in new officers. County Executive Tom D'Alesio was the installing officer.

Gail Chimento is the president of the organization. Other officers include Frank Bonavito, vice president; George Simon, treasurer; Jen

Cerce, corresponding secretary; Judy Apple, recording secretary; Raymond Pizzano, sergeant at arms; Chester Prosperi, Marie Burke, Michael Marotti, honorary board of trustees and Joe Alencio, Lois Servidio, Joe Carnovale, appointed board of trustees.



Mr. and Mrs. Steven Russo — nee Debra Sim

Debra Marie Sim wed to Steven Russo

Debra Marie Sim, daughter of Mr. and Mrs. William Sim of Toms River, formerly of Belleville, became the bride recently of Steven Russo, son of Mr. and Mrs. Norman Russo of Mahwah.

Rev. Paul Daleo performed the ceremony in Our Lady of Mt. Carmel Church, Passaic. A reception followed at The Palace, Lyndhurst.

The bride was escorted by her father. Gina DeBenedetto of Manalapan was maid of honor. Bridesmaids included Doreen Gonnello of Belleville, Shelley Russo of Mahwah and Jeannie Van De Ree of Vernon, sisters of the groom.

Damian Filardo of Mahwah served as best man. Ushering were Scott Sim of Belleville, brother of the bride, Peter Russo of Mahwah, brother of the groom and Walter Van De Ree, brother-in-law of the groom.

Mrs. Russo, a graduate of Belleville High School and Douglass College, Rutgers University, New Brunswick, is an advertising communications assistant at Subway World Headquarters, Milford, Conn.

Mr. Russo, an alumnus of Don Bosco Prep, Ramsey and William Paterson College, Wayne, is a primary care sales specialist with Parke-Davis Pharmaceuticals.

The couple cruised to Florida and the Bahamas following the Nov. 10 nuptials. They have made their home in Milford.

STORK CLUB

Jeremy Michael Pagano

A first child, a son, Jeremy Michael, was born to Mr. and Mrs. Bruce Pagano of Belleville Nov. 29 at St. Barnabas Medical Center, Livingston. Birth weight was 8 pounds, 2 ounces.

Mrs. Pagano is the former Kim Barrow, daughter of Mr. and Mrs. Al Barrow of Bloomfield. Mr. Pagano, son of Mr. and Mrs. Phil Pagano of Newark, is an operator engineer at St. Barnabas.

Clubwomen plan exhibit, art auction March 8

The Woman's Club of Belleville and the Junior Woman's Club announce a gala art exhibit and auction March 8 at Fawcett Memorial Presbyterian Church, Union Avenue. The public is invited to attend.

Tickets are \$3 and may be ordered in advance by calling Mary Ann at 759-8313.

The evening will start with a

preview at 6:30 a.m. followed by the auction at 7:30 p.m. Refreshments will be served throughout the evening. Each person in attendance will receive a lithograph and no purchase is necessary. Everyone is invited to browse and socialize.

This is an unusual event for Belleville and the clubwomen hope that it will be supported by the community.

REFLECTIONS OF DESIGN

Any Sex Haircutting • Nails • Jewelry • Handcrafted Gifts
Sportswear • Custom Mirrors • Hair Extensions

Behind Bay St. Train Station
43 Glenridge Avenue
Montclair
746-6688
Student • Senior Discount

\$10 Haircut

Wash & Set \$12

\$1.99 Hair Cut-A-Thon for Muscular Dystrophy
Sat. Feb. 16

All proceeds will go to the Muscular Dystrophy Association
Hours 9 a.m.-5 p.m. 2/16/91 only
Must Present Ad

JON BRIE'S
1047 Broad Street, Bloomfield
338-4745

Manicures \$8.00
Free Nail Art Included

PEOPLE FOR ANIMALS

Low Cost Spay/Neuter Clinic

433 Hillside Avenue, Hillside

Over 100,000 cats and dogs are destroyed in New Jersey annually because they are unwanted.

Cut & Save

PREGNANT AND IN-HEAT ANIMALS CAN BE SPAYED

Male Cats	\$25
Female Cats	\$35
Female Dogs	\$35-\$50
Male Dogs	\$25-\$35

Prices include all inoculations and examinations

Think For The Future

FOR APPOINTMENT PLEASE CALL 964-6887
CLOSED MONDAY

Clara Maass seeks more volunteers

Clara Maass Medical Center is seeking men and women with good interpersonal skills to volunteer two to three hours a week, between the hours of 4 to 8:30 p.m., in key reception areas of the medical center.

Volunteer receptionists are needed to answer telephones, direct visitors and do light clerical work. High school graduates, college students, young mothers or senior citizens are needed weekdays evenings or on the weekends.

If you are an adult who would like to brush up on your job skills, be in a stimulating environment or make new friends, call the Volunteer Office at 450-2150 for an interview.

While the Belleville Times always appreciates the submission of photos for its social pages, we reserve the right to determine if they are suitable to be printed. Fuzzy, out-of-focus, too dark or too light pictures will not be used.

Meyer's
Cafe • Restaurant
Have Your Next Affair In Our Brand New Dining Room

- Graduations • Meetings
- Showers • Birthdays • Funerals
- Sunday Buffets

277 Franklin Ave. • Nutley
667-8587

PORTRAIT STUDIO

PHOTO QWIK
COLOR LAB
361 FRANKLIN AVE.
BELLEVILLE 751-3456
CHANNEL SHOPPING
1 HOUR* DEVELOPING
ENLARGEMENTS

V. SYLVESTRO'S GARDEN MEAT MARKET

166 GARDEN AVE., BELLEVILLE, N.J.

FREE DELIVERY
759-1069

Food Stamps Accepted

for the **LENTEN DAYS**
Fresh FISH..
Daily

OUR FAMOUS...
VEAL CUTLETS
\$ **5.19** lb

LEAN...TENDER
CHOP MEAT
\$ **1.99** lb \$ **1.89** 5 lbs \$ **8.95**

PURE PORK
ITALIAN SAUSAGE
\$ **2.39** lb.

VEAL
SAUSAGE PATTIES
\$ **1.99** LB.

Fresh Cheese in Basket
Hot or Sweet
• Sopressate
• Provolone

Extra Large
EGGS 99¢ doz.

OUR OWN
PEPPERSTEAK lb **2.89**

PERDUE CHICKEN
CUTLETS.... lb **3.79**

BOCCONCINO
MOZZARELLA ROUND 3/4" TWIST lb **4.39**

Order Early!
LEG of LAMB
SMOKED & FRESH BONELESS
AND OTHER SPECIALTIES



QUALITY MEATS FRESH PRODUCE*
FRESH FISH FROZEN FOODS*
ITALIAN SPECIALTIES AND MORE

Breeze Through Our Legal System.

The Katharine Gibbs Paralegal Program is a comprehensive, 10 or 12-month evening course taught by top-notch attorneys. You'll gain skills that could lead to a lucrative position with a law firm, bank, corporation, insurance company or government agency.

The legal assistant is one of the fastest growing occupations in the country, and there's no time to waste. Don't let your career get bogged down in red tape. Our legal system delivers with results!

Classes start soon, so call or send in the coupon today!

Montclair (201) 744-6967

NS

Katharine Gibbs

The Shortest Distance Between You & Success

81 Plymouth Street, Montclair, NJ 07042

Name _____ Phone (H) _____ (W) _____

Address _____

Program of Interest _____ YR. HS GRAD _____

Four Ways You'll Save at Grand Union!

1. Everyday Low Prices!
2. Red Dot Specials!
3. Unadvertised Red Dot Specials!
4. Super Coupons!

354 MAIN AND JORALEMON AVE., BELLEVILLE • OPEN 24 HOURS • STORE DIAL 759-1750

BUY ONE, GET ONE....
FREE!
Get One 6.5-oz. Bag - Assorted Varieties
Cape Cod Potato Chips
When you purchase one 6.5-oz. Bag - Cape Cod Potato Chips at our regular low price.

BUY ONE, GET ONE....
FREE!
Get One 1-Qt. Cont. - Light Ice Milk Frozen Yogurt or
Edy's Grand Ice Cream
When you purchase one 1-Qt. Cont. Edy's Grand Ice Cream Light Ice Milk or Froz. Yogurt at our regular low price.

Super **GRANDUNION** Coupon
(605) BUY ONE, GET ONE...
FREE!
Get One 6.125-oz. Can - Chunk Light in Water or Oil
Chicken of the Sea Tuna
When you purchase one 6.125-oz. Can Chicken of the Sea Chunk Light Tuna at our regular low price.
Coupon Good Feb. 10 Thru Feb. 16.
Limit One Coupon Per Family.

BUY ONE, GET ONE....
FREE!
Get One 28-oz. Pkg. - Frozen Original
Banquet Fried Chicken
When you purchase one 28-oz. Pkg. - Banquet Original Fried Chicken at our regular low price.

BUY ONE, GET ONE....
FREE!
Get One 26-oz. Pkg.
Excellent Source of Vitamins A&C
Fresh Crisp Salad Tomatoes
When you purchase one 26-oz. Pkg. - Fresh Crisp Salad Tomatoes at our regular low price.

Super **GRANDUNION** Coupon
(606) BUY ONE, GET ONE...
FREE!
Get One Box - Regular or Thin Spaghetti or
Mueller's Elbows
When you purchase one 16-oz. Pkg. Mueller's Spaghetti or Elbow Macaroni at our regular low price.
Coupon Good Feb. 10 Thru Feb. 16.
Limit One Coupon Per Family.

U.S.D.A. Grade 'A' Fresh
Perdue Boneless Chicken Breasts
2.99
lb.

Significant Source of Vitamin A
Fresh Broccoli
Large 14 Size
99¢
Bunch

Super **GRANDUNION** Coupon
(607) BUY ONE, GET ONE...
FREE!
Get One 2-Liter Btl. Plus Deposit where req.
Regular or Diet
Cherry Coke or Sprite
When you purchase one 2-Liter Btl. Reg. or Diet Cherry Coke or Sprite at our regular low price.
Coupon Good Feb. 10 Thru Feb. 16.
Limit One Coupon Per Family.

BUY ONE, GET ONE....
FREE!
Get One 1-Lb. Cont.
Fruited & Glazed Baked Ham
When you purchase one 1-Lb. - Fruited & Glazed Baked Ham at our regular low price.

U.S.D.A. Choice
Boneless Ultra Trim Beef
Chuck Fillet Roast
1.98
lb.

U.S.D.A. Grade 'A' Fresh
Perdue Chicken Legs
Whole with Thighs
69¢
lb.

BUY ONE, GET ONE....
FREE!
Get One 1-Lb. Cont.
Land O Lakes Light Sour Cream
When you purchase one 1-Lb. Cont. - Land O Lakes Light Sour Cream at our regular low price.

BUY ONE, GET ONE....
FREE!
Get One 12.5-oz. Btl.
Cardini Caesar Salad Dressing
When you purchase one 12.5-oz. Btl. - Cardini Caesar Salad Dressing at our regular low price.

BUY ONE, GET ONE....
FREE!
Get One 8-oz. Pkg. - Frozen
Morton's Macaroni and Cheese
When you purchase one 8-oz. Pkg. - Morton's Macaroni and Cheese at our regular low price.

GRAND UNION

Belleville Times SPORTS

BUCK SHOTS

By Mike Lamberti



Mens basketball at Caldwell College has developed quite a Belleville flavor. The head coach/A.D. and the teams leading scorer are both products of the Belleville school system and the two have done quite well with their roles.

Mark Corino, a 1973 grad of Belleville High is not only the head basketball coach at Caldwell College, he is also the Athletic Director, assuming that difficult role two years ago.

Among the players on Corino's roster is a junior transfer from Upsala College named Ted Sochaski. Fans of Belleville basketball will quickly recognize Sochaski's name, because he is the all time leading scorer in the history of Belleville boys' basketball, with over 1700 points.

Sochaski, a 6'5" junior forward for Caldwell, his averaging over 16 ppg in his first year at the college. Before moving to Caldwell, Teddy was a standout offensive force for Upsala College.

"I think, under the difficult circumstances he has performed very well," Corino said of Sochaski. "With time, his game has improved. We recognize it is not the easiest thing."

What Corino refers to is the life of a transfer college student adapting to a new system in his third year of college and also adapting to the academic requirements. However, Corino credits Sochaski's good basketball background for getting the junior forward through the tough times.

"I think he is a very fundamentally sound player," Corino said. "He fits into the mold we were looking for."

Matt Stuart, another strong offensive player for Caldwell College, went down early in the season to injury. Thus, the offensive burden has been switched to Sochaski. It's a role Teddy is used to and he has flourished.

In a game against Dominican on January 16 of this year, Sochaski scored 24 points. Those 24 points helped put Sochaski over the 1,000 point mark for his collegiate career.

In a recent Caldwell victory over Centenary, Sochaski scored 26 points.

"(In) the first couple of games, I wasn't that comfortable," Sochaski said. "Now, I'm getting in game shape and getting used to the Caldwell system."

The young Caldwell Cougars have struggled this winter, putting together a 7-11 record through January. It hasn't discouraged Sochaski, however.

"In the long run, it will help us," he said. "The younger guys have seen a lot more playing time than they would have, if everybody was healthy."

Sochaski quickly made an impact on Belleville basketball. He and another freshman, Leon Puentes earned starting roles for then coach Rocco Colucci in the 1984-85 campaign. It was Colucci's first year as head coach, having taken over for Joe Papasidero.

Things didn't go too well for the '84-85 Bucs, as the team won just two games. However, Colucci's philosophy of building with youth was taking hold.

There was some improvement the following year, as the Bucs won five games and players like Bobby Hutchison, Donald Washington, Chris Chiaromonte, Sochaski and Puentes continued to improve.

Colucci resigned his position as head coach before the '86-87 season and Don Roll became the new coach. The Bucs continued its improvement in that season, winning nine games for the first time since 1982-83. At one point in the '86-87 season, the Bucs were 9-6, but the team struggled down the stretch, dropping its last nine games, including a heartbreaking loss in the state tourney to Union.

In that season, Sochaski surpassed the 1,000 point mark and it became obvious that he would seriously challenge Abdel Anderson's all time mens scoring mark at Belleville High.

When Anderson set the scoring record, in 1974-75, the Bellboys put together a winning record under then coach Dan Grasso. The Belleville boys' basketball program then hit a dry spell and the next winning season wouldn't come around until 1987-88, the senior year for players like Sochaski, Puentes, Chiaromonte and Steve Schwed.

The Bucs started off strong in '87-88 and in early January, Sochaski broke Anderson's scoring record. The following Friday, in a home game against Nutley, Sochaski was presented the game ball before a packed house. Sochaski and Co. then went out and led the Bucs to a spirited victory over a very good Nutley team. The game ended with the Belleville fans (literally) carrying Sochaski off the floor in a scene similar to "Hoosiers".

Puentes also joined the record book, hitting the 1,000 point plateau and marking the first time that

(continued on page 15)

Hoping for title shot tonight

Bucs ready for Sectionals

By Joe Piegare

You know, some things never change. Vince Lombardi's Packers will always be the greatest football team ever (despite protests from the Steelers and 49ers). Mickey Mantle will always be the most popular Yankee player (sorry Don Mattingly, sorry Joe DiMaggio). And Belleville will continue to dominate the North Jersey wrestling scene, notwithstanding challenges from St. Benedict's, Caldwell, Columbia, etc. etc. etc.

For the 11th consecutive year, Belleville's pride and joy qualified for the state Sectional Championship. In a field of eight teams, BHS drew a Number 2 seed behind top rated Phillipsburg. The remaining six teams in Group 3 Section 2 were: No. 3 Warren Hills; No. 4 Cranford; No. 5 Scotch Plains; No. 6 Parsippany Hills; No. 7 Mt. Olive, and No. 8 Parsippany.

On Tuesday, February 12, Belleville will face Mt. Olive and Warren Hills will face Parsippany Hills at Belleville's gymnasium beginning at 5 p.m. The two winners will face each other at 7 p.m. and that winner will travel (probably to Phillipsburg) on Thursday, February 14, for the Group 3 Section 2 championship.

What qualified our Bucs for the Sectionals was a 14-1 record, built against seven teams that also made the Sectionals (Bloomfield, Bernards, South River, St. Joseph's (Montvale), Bergen Catholic, Paramus and Cliffside Park).

With Cedar Grove and/or Montclair remaining on the slate, BHS will have faced nine teams in the state championships out of a 17 team schedule. How many teams can get through that kind of schedule and still come out at 14-1?

The last two wins at 14-1 record were victories over Hackensack 59-11, and Cliffside Park 36-24. The Comets of Hackensack were a team riddled with injuries and athletes who gave up the sport. Therefore, the high point total was not unexpected, even though the Comets were creditable 6-6.

Cliffside Park's Red Raiders were 12-2 and the No. 2 seed in the Group 4 Sectional State Sectionals. They managed to win only five bouts (including a forfeit at 189) as our Bucs dominated a very good, very physical and very scrappy play off squad.

The script for this year's team has been relatively simple. Josh Cardinale opens with a win, followed by Mike Conte, Vinnie DeSimone, Lee Hands, and Dan Hywel adding wins of their own. Against Hackensack and Cliffside Park, the script was on target almost every time.

Cardinale decked Mike Walker of Hackensack at 3:38 of the second period, then took a breather against Cliffside Park by gaining a forfeit. Now at 19-0, Cardinale has exhausted most literary explosives and has elevated himself to the status of state quality competitor.

Mike Conte improved to 17-3 by splitting a pair of nailbites. A 4-3 win over Hackensack's Jay Dow was followed by a 2-0 loss to Kevin Pierski, Cliffside Park's best wrestler along with 130 pounder Jeff McNeary. The loss to Pierski was a closely fought duel; with Conte on top at the buzzer attempting to turn the Red Raider wrestler for back points.

119 pounder Tom Pontrella bettered his own record, now 14-6, by also winning twice. A forfeit at Hackensack was followed by a 2-0 squeaker over Cliffside Park's Al Abbatiello. Upon further scrutiny, Pontrella's six losses have come against some pretty fair country wrestlers: two losses to 2 time state qualifier Anthony Melnicki of Nutley, a loss to 2 time state qualifier Anthony Riggio of St. Joe's, a loss to state qualifier John Hernandez of Bergen Catholic; a loss to Passaic County champ Anthony Genereale; a loss to Elizabeth Minuteman Classic champ Al Mammano of Long Branch. Not too shabby Tom!

Senior Mike Miele returned to action after missing more than a month with a broken left wrist. An easy 10-4 decision over Cliffside Park's Chris Petrucci showed that Mike is not far off his form after such a long layoff. Now at 9-0, Miele is up in the air as to whether he will compete at 119 or 125 at Districts.

Another recent returnee to

action is Junior Nardone. After a remarkable comeback last week against Paramus, Junior continued to heal, topping Chris Andreoski of Hackensack 12-1, then dominating Cliffside Park's Jeff McNeary, 10-3. Now at 3-0, Nardone should be in top shape by the time the District 7 tournament arrives.

Two time winners last week were in abundance, and 135 pounder Carlo Ritacco was one of the many happy warriors. Now at 14-4, Carlo pinned both foes, giving him an even dozen falls this year. Twenty wins in a wrestler's first full varsity season is a distinguished accomplishment. It is certainly within Ritacco's reach if he finishes the season with a flourish.

Returning District 7 champ Vinnie DeSimone is currently on a tear, posting a 15-4 mark with nine consecutive wins. A 13-0 Major Decision over Hackensack's George Jaquette preceded a 6-4 white knuckler over Aram Ingillian of Cliffside Park. The close decision over Ingillian was the only competitive match Vinnie has had since the Elizabeth Minuteman Classic held in early January.

Co-Captain Lee Hands posted two falls, one over Hackensack's Jeff Johnson, the other over Joe Kahn of Cliffside Park. With a 13-1 record, Lee now has 53 career wins, only three away from being No. 13 on the all time BHS win list. Wrestling less than four full years,

(continued on page 15)

Lady Bucs defeat Paramus, Orange

By Mike Lamberti

THE STREAK has reached two games. For the Belleville girls' basketball team, THE STREAK signifies two straight victories and for a team that is rebuilding, any type of winning streak is encouraging.

Karen Fucello's team won its last two games last week, beating Orange 36-33 and Paramus 48-46. The victory over Paramus came in overtime and Fucello felt it was the biggest win for her team so far this season.

So, with a 5-5 record and a two game winning streak, the Lady Bucs will travel to Hackensack this afternoon for a 4 p.m. game. Next Tuesday, the assignment becomes quite difficult when the Lady Bucs travel to Paterson to face an awesome Paterson Kennedy squad. Kennedy is the defending state champions and the Lady Knights have just one defeat so far in 1990-91.

The game with Paramus last Monday was a very big win for the Lady Bucs. Belleville needed a victory in the NNJIL and earlier in

the season, Paramus had beaten Belleville by 17 points.

It was a hard fought game from the outset, as Paramus led 18-17 after one quarter and 26-25 at halftime. Belleville gained a 39-38 lead after three quarters, but Paramus came back to take a 46-43 lead late in regulation time.

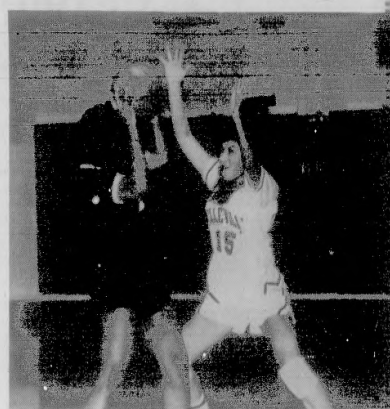
Colleen Mannion, who scored 15 points for Belleville, hit a key three point basket to tie the game at 46 and force the overtime.

The overtime was a defensive standoff, with only two points being scored. Fortunately, the two points were scored by Belleville, as Yanina Calvi hit two free throws for the victory.

"It was a big game for our kids," Fucello said. "I'm proud of the way they stayed in there. They really wanted this game and gave it everything they had."

Danielle DeWork had a tremendous game for Belleville, scoring 18 points. As mentioned, Mannion scored 15. Jennifer Abrams scored

(continued on page 16)



Playing solid defense for the Lady Bucs basketball team is Zulay Fiallos. The senior is one of Belleville's best defensive players.

Bucs register big win vs. St. Joe's

By Mike Lamberti

What goes around, comes around. So, it was poetic justice when the Belleville boys' basketball team won two straight games last week, both in the first seconds of play.

The Bucs stunned highly regarded St. Joe's of Montvale, 54-52 at Belleville High School last Tuesday. Don Roll's club then came back to beat Bloomfield, 57-55 last Friday afternoon. The win over Bloomfield was Belleville's third straight and boosted the team record to 8-10 on the season.

Belleville took its new found confidence level into a game with Paramus last Monday. This afternoon, the Bucs are home to Hackensack in a 4 p.m. game. Next Tuesday, Montclair visits in a 4 p.m. start.

"It's about time we took a few of those games," Roll said after the win over Bloomfield. "We've come close on at least three occasions and ended up losing. It's good to win a close game, because it shows our kids they have the ability to win down the stretch."

The victory over St. Joe's on February 5 was the Bucs' biggest of the 1990-91 campaign so far. St. Joe's came in to the game with a 14-2 record and sole possession of first place in the NNJIL Pacific Division. Earlier this season, the Bergen County power had beaten the Bucs by 19 in Montvale.

"They are a solid team," Roll said of St. Joe's. "But earlier in the year, when we lost to them in Montvale, I felt we could be much more competitive the next time we played them. When our kids play to their potential, they can be very competitive."

The Bucs took command early, taking a 17-10 lead after one quarter. St. Joe's cut into the deficit, narrowing the lead to 30-28 at halftime. In the third quarter, Belleville played a suffocating brand of defense, holding the potent St. Joe's offense to just two points. Belleville outscored its guests 10-2 and took a 40-30 lead into the final eight minutes.

"We used a 1-3-1 defense in the third quarter and it shut them down," Roll said of the Bucs defense. "The kids really executed well."

St. Joe's didn't attain a 14-2 record because it gave up when it trailed after three quarters. The Bergen County team came storming back in the final quarter and narrowed the lead to 54-52 with seconds left.

St. Joe's got a big break when the Bucs turned the ball over with 45 left. St. Joe's inbounder, Belleville's defense played tough and forced a less than perfect inbound pass. The St. Joe's player caught the ball, turned and launched a shot from three quarters of a court away from his basket. The ball had perfect trajectory and appeared to

be heading into the basket for what would be a three point shot and St. Joe's victory.

Upon reaching the rim, the ball hit the back of the rim and bounced harmlessly away. Roll's collective sigh of relief could be heard in the BHS parking lot. The Bucs had won a huge game, but not without some last minute histrionics.

"When he shot the ball, it looked like it was going in," Roll said. "I didn't know what I would do if the ball did go in. Fortunately, we didn't have to think about it."

Troy Talmadge led the Belleville attack with 23 points. Dennis DeWork scored 14, Sal Straface finished with ten, Bryant Jimenez scored three and Ken Johansen and Jim DeFaine scored two each.

Versus Bloomfield, Belleville jumped out to an early lead once again and then held on against a pesky group of Bengals. The Bucs led 15-10 after one quarter and 28-26 at halftime. It was 45-43 after three quarters and the fourth quarter was a see-saw affair that saw Bloomfield take a 55-53 lead late in regulation time.

Ken Johansen hit a clutch free throw to tie the game at 55 with a minute left. Bloomfield inbounded and attempted a jump shot for the lead with 40 left. The ball missed and the Bucs rebounded. Roll had his team spread the floor and look for the final shot, but a Buccaneer

pass went astray and the Bengals took possession with 13 left and the game tied.

Things looked good for Bloomfield, but Straface soon changed that when he stole a pass and put in a layup with :08 left to give the Bucs the lead for good.

Bloomfield attempted a shot at the buzzer which fell short and Belleville had its second heartstopping win of the week.

It was also Belleville's third straight win and marked the first time Belleville has won three straight in boys' basketball since 1988.

"We didn't play that well against Bloomfield," Roll said. "We missed a lot of layups, but the kids found a way to win, and that was encouraging."

Talmadge led the Belleville scoring attack again; this time with 17 points. DeWork had 14, Straface scored ten, John Sipp played a solid game, scoring eight points, DeFaine finished with six and Art Caruso and Ken Johansen scored one point each.

"Sipp gave us some excellent rebounding," Roll said of the senior forward. "He kept the ball alive on the offensive side and pulled down some key rebounds on defense."

All in all, it was a good week for the Bucs. The victories should provide a lot of confidence for the stretch run.

Buc Shots

(continued from page 13)

teammates on Belleville boys' basketball both eclipsed 1,000 points in a career.

The combination helped the Bucs to a winning season, with a 15-10 mark. The 15 wins were two more than the '74-75 team, which posted a 13-10 record in the old Big 10 Conference.

As for Corino, he has had a stellar coaching career. Before taking on the duties as Athletic Director at Caldwell in the Summer of '89, he was a standout basketball coach at Bloomfield College.

Corino is the youngest of the now famous Corino brothers of Belleville. Oldest brother Jimmy was a phenomenal basketball coach at Lyndhurst. Today, he is a principal in that school system. Carl Corino is of course the legendary softball coach here in Belleville who has directed his team to well over 200 wins in just 11 seasons. Both Jim and Carl are members of the

Belleville Hall of Fame and Mark shouldn't be too far behind in attaining that honor.

Next week, we'll take a look at the 1,000 point scorers in Belleville mens' basketball history.

SPORTS NEWS

Did you see the UNLV-Arkansas college basketball game last Sunday? It's going to be very difficult to beat the Runnin' Rebels come March Madness time. A team like Arizona, or maybe Ohio State or even Arkansas in a rematch could pull the trick in the NCAA tourney, but it's going to be tough.

Memorial Day is just 108 days away, and that means it's time to start counting down to the John and Janet Engel Memorial Day Picnic. I'll have information on the exact date, so everyone can order tickets and make the necessary travel arrangements to get to John and Jan's house. Don't miss this picnic, it's the social event of the year.

Baseball season is still seven weeks away and already, the St. Louis Cardinals have been mathematically eliminated from the N.L. East race. Can we fire Joe Torre yet?

Are Bucs in line for title

(continued from page 13)
what in the world would this kid have done if he had two or three years of experience?

Belleville's third injury returnee, Co-Captain Dan Hywel, extended his record to 11-1 by receiving a forfeit at Hackensack and pinning Cliffside's Joe Hoffnagel in 1:44. With 77 career victories, Danny now stands alone in fifth place on the all time Top 20 win list. Some time in the Regionals, Hywel should pass Dom Cerreto's 83 wins to occupy the No. 4 spot on the win roster.

Heavyweight George Wallace has had his name added to the disabled roster with a slight tear of his cartilage and ligament in the right knee. Jayvee champ Anthony Mastropolo has so far filled in admirably, splitting two falls against Hackensack and Cliffside

Park. Unless Wallace heats in a hurry, Anthony will carry the colors into the District 7 tourney next week against a highly competitive heavyweight field.

BUC NOTE: According to the power ratings published by the state for the sectional matchups, BHS now stands third in Region 2 with a 30.08 power index. St. Benedict's is second with a 30.25 index and North Bergen is first with a 31.00 rating. A strong showing in the sectionals and districts could win the Region 2 title for the Bucs.

Answer to last week's Trivia Question — 5 BHS matmen have had two undefeated dual meet seasons: Nick DeDomenico, 8-0 in 1966 and 11-0 in 1967; Chris Musmanno, 14-0 in 1979 and 12-0 in 1980; Mike Gibbons, 15-0 in 1984

(continued on page 18)

1991
COOL WINTER VALUES...

NO MATTER WHERE YOU PURCHASED YOUR FORD OR LINCOLN/MERCUARY, WE WILL SERVICE IT AND ALSO HONOR YOUR WARRANTY.

MOTORCRAFT ENGINE TUNE-UP SPECIAL
Semi state tune up incl. installation of Motorcraft Spark Plugs, replace oil, filter, belts, spark plug wires and distribute cap. check idle speed & timing, accessories, hoses, etc. 3.8L, 5.0L, 5.8L, 7.3L, 7.5L, 7.8L, 8.0L, 9.0L, 9.3L, 9.4L, 9.7L, 10.0L, 10.8L, 12.0L, 12.6L, 13.0L, 13.6L, 14.0L, 14.7L, 15.0L, 15.9L, 16.0L, 16.9L, 17.0L, 17.9L, 18.0L, 18.7L, 19.0L, 19.9L, 20.0L, 20.9L, 21.0L, 21.9L, 22.0L, 22.9L, 23.0L, 23.9L, 24.0L, 24.9L, 25.0L, 25.9L, 26.0L, 26.9L, 27.0L, 27.9L, 28.0L, 28.9L, 29.0L, 29.9L, 30.0L, 30.9L, 31.0L, 31.9L, 32.0L, 32.9L, 33.0L, 33.9L, 34.0L, 34.9L, 35.0L, 35.9L, 36.0L, 36.9L, 37.0L, 37.9L, 38.0L, 38.9L, 39.0L, 39.9L, 40.0L, 40.9L, 41.0L, 41.9L, 42.0L, 42.9L, 43.0L, 43.9L, 44.0L, 44.9L, 45.0L, 45.9L, 46.0L, 46.9L, 47.0L, 47.9L, 48.0L, 48.9L, 49.0L, 49.9L, 50.0L, 50.9L, 51.0L, 51.9L, 52.0L, 52.9L, 53.0L, 53.9L, 54.0L, 54.9L, 55.0L, 55.9L, 56.0L, 56.9L, 57.0L, 57.9L, 58.0L, 58.9L, 59.0L, 59.9L, 60.0L, 60.9L, 61.0L, 61.9L, 62.0L, 62.9L, 63.0L, 63.9L, 64.0L, 64.9L, 65.0L, 65.9L, 66.0L, 66.9L, 67.0L, 67.9L, 68.0L, 68.9L, 69.0L, 69.9L, 70.0L, 70.9L, 71.0L, 71.9L, 72.0L, 72.9L, 73.0L, 73.9L, 74.0L, 74.9L, 75.0L, 75.9L, 76.0L, 76.9L, 77.0L, 77.9L, 78.0L, 78.9L, 79.0L, 79.9L, 80.0L, 80.9L, 81.0L, 81.9L, 82.0L, 82.9L, 83.0L, 83.9L, 84.0L, 84.9L, 85.0L, 85.9L, 86.0L, 86.9L, 87.0L, 87.9L, 88.0L, 88.9L, 89.0L, 89.9L, 90.0L, 90.9L, 91.0L, 91.9L, 92.0L, 92.9L, 93.0L, 93.9L, 94.0L, 94.9L, 95.0L, 95.9L, 96.0L, 96.9L, 97.0L, 97.9L, 98.0L, 98.9L, 99.0L, 99.9L, 100.0L, 100.9L, 101.0L, 101.9L, 102.0L, 102.9L, 103.0L, 103.9L, 104.0L, 104.9L, 105.0L, 105.9L, 106.0L, 106.9L, 107.0L, 107.9L, 108.0L, 108.9L, 109.0L, 109.9L, 110.0L, 110.9L, 111.0L, 111.9L, 112.0L, 112.9L, 113.0L, 113.9L, 114.0L, 114.9L, 115.0L, 115.9L, 116.0L, 116.9L, 117.0L, 117.9L, 118.0L, 118.9L, 119.0L, 119.9L, 120.0L, 120.9L, 121.0L, 121.9L, 122.0L, 122.9L, 123.0L, 123.9L, 124.0L, 124.9L, 125.0L, 125.9L, 126.0L, 126.9L, 127.0L, 127.9L, 128.0L, 128.9L, 129.0L, 129.9L, 130.0L, 130.9L, 131.0L, 131.9L, 132.0L, 132.9L, 133.0L, 133.9L, 134.0L, 134.9L, 135.0L, 135.9L, 136.0L, 136.9L, 137.0L, 137.9L, 138.0L, 138.9L, 139.0L, 139.9L, 140.0L, 140.9L, 141.0L, 141.9L, 142.0L, 142.9L, 143.0L, 143.9L, 144.0L, 144.9L, 145.0L, 145.9L, 146.0L, 146.9L, 147.0L, 147.9L, 148.0L, 148.9L, 149.0L, 149.9L, 150.0L, 150.9L, 151.0L, 151.9L, 152.0L, 152.9L, 153.0L, 153.9L, 154.0L, 154.9L, 155.0L, 155.9L, 156.0L, 156.9L, 157.0L, 157.9L, 158.0L, 158.9L, 159.0L, 159.9L, 160.0L, 160.9L, 161.0L, 161.9L, 162.0L, 162.9L, 163.0L, 163.9L, 164.0L, 164.9L, 165.0L, 165.9L, 166.0L, 166.9L, 167.0L, 167.9L, 168.0L, 168.9L, 169.0L, 169.9L, 170.0L, 170.9L, 171.0L, 171.9L, 172.0L, 172.9L, 173.0L, 173.9L, 174.0L, 174.9L, 175.0L, 175.9L, 176.0L, 176.9L, 177.0L, 177.9L, 178.0L, 178.9L, 179.0L, 179.9L, 180.0L, 180.9L, 181.0L, 181.9L, 182.0L, 182.9L, 183.0L, 183.9L, 184.0L, 184.9L, 185.0L, 185.9L, 186.0L, 186.9L, 187.0L, 187.9L, 188.0L, 188.9L, 189.0L, 189.9L, 190.0L, 190.9L, 191.0L, 191.9L, 192.0L, 192.9L, 193.0L, 193.9L, 194.0L, 194.9L, 195.0L, 195.9L, 196.0L, 196.9L, 197.0L, 197.9L, 198.0L, 198.9L, 199.0L, 199.9L, 200.0L, 200.9L, 201.0L, 201.9L, 202.0L, 202.9L, 203.0L, 203.9L, 204.0L, 204.9L, 205.0L, 205.9L, 206.0L, 206.9L, 207.0L, 207.9L, 208.0L, 208.9L, 209.0L, 209.9L, 210.0L, 210.9L, 211.0L, 211.9L, 212.0L, 212.9L, 213.0L, 213.9L, 214.0L, 214.9L, 215.0L, 215.9L, 216.0L, 216.9L, 217.0L, 217.9L, 218.0L, 218.9L, 219.0L, 219.9L, 220.0L, 220.9L, 221.0L, 221.9L, 222.0L, 222.9L, 223.0L, 223.9L, 224.0L, 224.9L, 225.0L, 225.9L, 226.0L, 226.9L, 227.0L, 227.9L, 228.0L, 228.9L, 229.0L, 229.9L, 230.0L, 230.9L, 231.0L, 231.9L, 232.0L, 232.9L, 233.0L, 233.9L, 234.0L, 234.9L, 235.0L, 235.9L, 236.0L, 236.9L, 237.0L, 237.9L, 238.0L, 238.9L, 239.0L, 239.9L, 240.0L, 240.9L, 241.0L, 241.9L, 242.0L, 242.9L, 243.0L, 243.9L, 244.0L, 244.9L, 245.0L, 245.9L, 246.0L, 246.9L, 247.0L, 247.9L, 248.0L, 248.9L, 249.0L, 249.9L, 250.0L, 250.9L, 251.0L, 251.9L, 252.0L, 252.9L, 253.0L, 253.9L, 254.0L, 254.9L, 255.0L, 255.9L, 256.0L, 256.9L, 257.0L, 257.9L, 258.0L, 258.9L, 259.0L, 259.9L, 260.0L, 260.9L, 261.0L, 261.9L, 262.0L, 262.9L, 263.0L, 263.9L, 264.0L, 264.9L, 265.0L, 265.9L, 266.0L, 266.9L, 267.0L, 267.9L, 268.0L, 268.9L, 269.0L, 269.9L, 270.0L, 270.9L, 271.0L, 271.9L, 272.0L, 272.9L, 273.0L, 273.9L, 274.0L, 274.9L, 275.0L, 275.9L, 276.0L, 276.9L, 277.0L, 277.9L, 278.0L, 278.9L, 279.0L, 279.9L, 280.0L, 280.9L, 281.0L, 281.9L, 282.0L, 282.9L, 283.0L, 283.9L, 284.0L, 284.9L, 285.0L, 285.9L, 286.0L, 286.9L, 287.0L, 287.9L, 288.0L, 288.9L, 289.0L, 289.9L, 290.0L, 290.9L, 291.0L, 291.9L, 292.0L, 292.9L, 293.0L, 293.9L, 294.0L, 294.9L, 295.0L, 295.9L, 296.0L, 296.9L, 297.0L, 297.9L, 298.0L, 298.9L, 299.0L, 299.9L, 300.0L, 300.9L, 301.0L, 301.9L, 302.0L, 302.9L, 303.0L, 303.9L, 304.0L, 304.9L, 305.0L, 305.9L, 306.0L, 306.9L, 307.0L, 307.9L, 308.0L, 308.9L, 309.0L, 309.9L, 310.0L, 310.9L, 311.0L, 311.9L, 312.0L, 312.9L, 313.0L, 313.9L, 314.0L, 314.9L, 315.0L, 315.9L, 316.0L, 316.9L, 317.0L, 317.9L, 318.0L, 318.9L, 319.0L, 319.9L, 320.0L, 320.9L, 321.0L, 321.9L, 322.0L, 322.9L, 323.0L, 323.9L, 324.0L, 324.9L, 325.0L, 325.9L, 326.0L, 326.9L, 327.0L, 327.9L, 328.0L, 328.9L, 329.0L, 329.9L, 330.0L, 330.9L, 331.0L, 331.9L, 332.0L, 332.9L, 333.0L, 333.9L, 334.0L, 334.9L, 335.0L, 335.9L, 336.0L, 336.9L, 337.0L, 337.9L, 338.0L, 338.9L, 339.0L, 339.9L, 340.0L, 340.9L, 341.0L, 341.9L, 342.0L, 342.9L, 343.0L, 343.9L, 344.0L, 344.9L, 345.0L, 345.9L, 346.0L, 346.9L, 347.0L, 347.9L, 348.0L, 348.9L, 349.0L, 349.9L, 350.0L, 350.9L, 351.0L, 351.9L, 352.0L, 352.9L, 353.0L, 353.9L, 354.0L, 354.9L, 355.0L, 355.9L, 356.0L, 356.9L, 357.0L, 357.9L, 358.0L, 358.9L, 359.0L, 359.9L, 360.0L, 360.9L, 361.0L, 361.9L, 362.0L, 362.9L, 363.0L, 363.9L, 364.0L, 364.9L, 365.0L, 365.9L, 366.0L, 366.9L, 367.0L, 367.9L, 368.0L, 368.9L, 369.0L, 369.9L, 370.0L, 370.9L, 371.0L, 371.9L, 372.0L, 372.9L, 373.0L, 373.9L, 374.0L, 374.9L, 375.0L, 375.9L, 376.0L, 376.9L, 377.0L, 377.9L, 378.0L, 378.9L, 379.0L, 379.9L, 380.0L, 380.9L, 381.0L, 381.9L, 382.0L, 382.9L, 383.0L, 383.9L, 384.0L, 384.9L, 385.0L, 385.9L, 386.0L, 386.9L, 387.0L, 387.9L, 388.0L, 388.9L, 389.0L, 389.9L, 390.0L, 390.9L, 391.0L, 391.9L, 392.0L, 392.9L, 393.0L, 393.9L, 394.0L, 394.9L, 395.0L, 395.9L, 396.0L, 396.9L, 397.0L, 397.9L, 398.0L, 398.9L, 399.0L, 399.9L, 400.0L, 400.9L, 401.0L, 401.9L, 402.0L, 402.9L, 403.0L, 403.9L, 404.0L, 404.9L, 405.0L, 405.9L, 406.0L, 406.9L, 407.0L, 407.9L, 408.0L, 408.9L, 409.0L, 409.9L, 410.0L, 410.9L, 411.0L, 411.9L, 412.0L, 412.9L, 413.0L, 413.9L, 414.0L, 414.9L, 415.0L, 415.9L, 416.0L, 416.9L, 417.0L, 417.9L, 418.0L, 418.9L, 419.0L, 419.9L, 420.0L, 420.9L, 421.0L, 421.9L, 422.0L, 422.9L, 423.0L, 423.9L, 424.0L, 424.9L, 425.0L, 425.9L, 426.0L, 426.9L, 427.0L, 427.9L, 428.0L, 428.9L, 429.0L, 429.9L, 430.0L, 430.9L, 431.0L, 431.9L, 432.0L, 432.9L, 433.0L, 433.9L, 434.0L, 434.9L, 435.0L, 435.9L, 436.0L, 436.9L, 437.0L, 437.9L, 438.0L, 438.9L, 439.0L, 439.9L, 440.0L, 440.9L, 441.0L, 441.9L, 442.0L, 442.9L, 443.0L, 443.9L, 444.0L, 444.9L, 445.0L, 445.9L, 446.0L, 446.9L, 447.0L, 447.9L, 448.0L, 448.9L, 449.0L, 449.9L, 450.0L, 450.9L, 451.0L, 451.9L, 452.0L, 452.9L, 453.0L, 453.9L, 454.0L, 454.9L, 455.0L, 455.9L, 456.0L, 456.9L, 457.0L, 457.9L, 458.0L, 458.9L, 459.0L, 459.9L, 460.0L, 460.9L, 461.0L, 461.9L, 462.0L, 462.9L, 463.0L, 463.9L, 464.0L, 464.9L, 465.0L, 465.9L, 466.0L, 466.9L, 467.0L, 467.9L, 468.0L, 468.9L, 469.0L, 469.9L, 470.0L, 470.9L, 471.0L, 471.9L, 472.0L, 472.9L, 473.0L, 473.9L, 474.0L, 474.9L, 475.0L, 475.9L, 476.0L, 476.9L, 477.0L, 477.9L, 478.0L, 478.9L, 479.0L, 479.9L, 480.0L, 480.9L, 481.0L, 481.9L, 482.0L, 482.9L, 483.0L, 483.9L, 484.0L, 484.9L, 485.0L, 485.9L, 486.0L, 486.9L, 487.0L, 487.9L, 488.0L, 488.9L, 489.0L, 489.9L, 490.0L, 490.9L, 491.0L, 491.9L, 492.0L, 492.9L, 493.0L, 493.9L, 494.0L, 494.9L, 495.0L, 495.9L, 496.0L, 496.9L, 497.0L, 497.9L, 498.0L, 498.9L, 499.0L, 499.9L, 500.0L, 500.9L, 501.0L, 501.9L, 502.0L, 502.9L, 503.0L, 503.9L, 504.0L, 504.9L, 505.0L, 505.9L, 506.0L, 506.9L, 507.0L, 507.9L, 508.0L, 508.9L, 509.0L, 509.9L, 510.0L, 510.9L, 511.0L, 511.9L, 512.0L, 512.9L, 513.0L, 513.9L, 514.0L, 514.9L, 515.0L, 515.9L, 516.0L, 516.9L, 517.0L, 517.9L, 518.0L, 518.9L, 519.0L, 519.9L, 520.0L, 520.9L, 521.0L, 521.9L, 522.0L, 522.9L, 523.0L, 523.9L, 524.0L, 524.9L, 525.0L, 525.9L, 526.0L, 526.9L, 527.0L, 527.9L, 528.0L, 528.9L, 529.0L, 529.9L, 530.0L, 530.9L, 531.0L, 531.9L, 532.0L, 532.9L, 533.0L, 533.9L, 534.0L, 534.9L, 535.0L, 535.9L, 536.0L, 536.9L, 537.0L, 537.9L, 538.0L, 538.9L, 539.0L, 539.9L, 540.0L, 540.9L, 541.0L, 541.9L, 542.0L, 542.9L, 543.0L, 543.9L, 544.0L, 544.9L, 545.0L, 545.9L, 546.0L, 546.9L, 547.0L, 547.9L, 548.0L, 548.9L, 549.0L, 549.9L, 550.0L, 550.9L, 551.0L, 551.9L, 552.0L, 552.9L, 553.0L, 553.9L, 554.0L, 554.9L, 555.0L, 555.9L, 556.0L, 556.9L, 557.0L, 557.9L, 558.0L, 558.9L, 559.0L, 559.9L, 560.0L, 560.9L, 561.0L, 561.9L, 562.0L, 562.9L, 563.0L, 563.9L, 564.0L, 564.9L, 565.0L, 565.9L, 566.0L, 566.9L, 567.0L, 567.9L, 568.0L, 568.9L, 569.0L, 569.9L, 570.0L, 570.9L, 571.0L, 571.9L, 572.0L, 572.9L, 573.0L, 573.9L, 574.0L, 574.9L, 575.0L, 575.9L, 576.0L, 576.9L, 577.0L, 577.9L, 578.0L, 578.9L, 579.0L, 579.9L, 580.0L, 580.9L, 581.0L, 581.9L, 582.0L, 582.9L, 583.0L, 583.9L, 584.0L, 584.9L, 585.0L, 585.9L, 586.0L, 586.9L, 587.0L, 587.9L, 588.0L, 588.9L, 589.0L, 589.9L, 590.0L, 590.9L, 591.0L, 591.9L, 592.0L, 592.9L, 593.0L, 593.9L, 594.0L, 594.9L, 595.0L, 595.9L, 596.0L, 596.9L, 597.0L, 597.9L, 598.0L, 598.9L, 599.0L, 599.9L, 600.0L, 600.9L, 601.0L, 601.9L, 602.0L, 602.9L, 603.0L, 603.9L, 604.0L, 604.9L, 605.0L, 605.9L, 606.0L, 606.9L, 607.0L, 607.9L, 608.0L, 608.9L, 609.0L, 609.9L, 610.0L, 610.9L, 611.0L, 611.9L, 612.0L, 612.9L, 613.0L, 613.9L, 614.0L, 614.9L, 615.0L, 615.9L, 616.0L, 616.9L, 617.0L, 617.9L, 618.0L, 618.9L, 619.0L, 619.9L, 620.0L, 620.9L, 621.0L, 621.9L, 622.0L, 622.9L, 623.0L, 623.9L, 624.0L, 624.9L, 625.0L, 625.9L, 626.0L, 626.9L, 627.0L, 627.9L, 628.0L, 628.9L, 629.0L, 629.9L, 630.0L, 630.9L, 631.0L, 631.9L, 632.0L, 632.9L, 633.0L, 633.9L, 634.0L, 634.9L, 635.0L, 635.9L, 636.0L, 636.9L, 637.0L, 637.9L, 638.0L, 638.9L, 639.0L, 639.9L, 640.0L, 640.9L, 641.0L, 641.9L, 642.0L, 642.9L, 643.0L, 643.9L, 644.0L, 644.9L, 645.0L, 645.9L, 646.0L, 646.9L, 647.0L, 647.9L, 648.0L, 648.9L, 649.0L, 649.9L, 650.0L, 650.9L, 651.0L, 651.9L, 652.0L, 652.9L, 653.0L, 653.9L, 654.0L, 654.9L, 655.0L, 655.9L, 656.0L, 656.9L, 657.0L, 657.9L, 658.0L, 658.9L, 659.0L, 659.9L, 660.0L, 660.9L, 661.0L, 661.9L, 662.0L, 662.9L, 663.0L, 663.9L, 664.0L, 664.9L, 665.0L, 665.9L, 666.0L, 666.9L, 667.0L, 667.9L, 668.0L, 668.9L, 669.0L, 669.9L, 670.0L, 670.9L, 671.0L, 671.9L, 672.0L, 672.9L, 673.0L, 673.9L, 674.0L, 674.9L, 675.0L, 675.9L, 676.0L, 676.9L, 677.0



Yanina Calvi goes up for two points during recent Belleville game. It was Calvi's two free throws in overtime that sealed Belleville's win over Paramus last Monday.



Colleen Mannon launches a layup during Belleville victory over St. Vincent's. Mannon scored 33 points in two Belleville victories last week.



Belleville's Liz Ramirez passes to teammate during recent game at Belleville High. Ramirez has played very well in her first year of varsity competition. (Photos by Michele Suchomel)

CALLING ALL CARDS

The most affordable way to advertise



GIOVANNI'S LANDSCAPING & CONSTRUCTION
Lawn Maintenance • Sod • Rail Road Tie Walls
Masonry Work • Side Walks • Steps • Etc.
Reasonable Rate
Free Estimates
(301) 661-3628



**PAUL'S
MOVING & TRUCKING CO., INC.**
Local & Long Distance
Lake & Shore Areas
Packing
Light Deliveries
Snow Plowing
328 Elizabeth Street
Orange, N.J.
Days: (201) 875-6440
(201) 982-2182
Nights: (201) 875-5925



**EVELYN JACQUIN
SECRETARY**
**ECONOMY
PLUMBING & HEATING, INC.**
INDUSTRIAL • RESIDENTIAL • COMMERCIAL
COMPLETE SEWER & WATER SERVICES
WET TAPS • WATER HEATERS • GAS BOILERS
WATER PURIFICATION SYSTEMS
(201) 748-5390
N.J. 81485 BLOOMFIELD, N.J.

DAVE MARTINEZ

FULLY INSURED

Floor Covering Specialists

VINYL • CARPET
TILE • HARDWOOD

COMMERCIAL & RESIDENTIAL
SALES & INSTALLATION BELLEVILLE, N.J.
759-4991



312 Washington Ave.
BELLEVILLE
Janice Huber
450-0336

ELECTROLYSIS BY CHERYL

• Remove Unwanted Hair Permanently •
CERTIFIED AND MEDICALLY APPROVED
Free Consultation Personal Needs
By Appointment Only
661-3831

Telephone
(201) 584-1960

WAYNE A. CHIEPPA, D.P.M.
PODIATRY AND PODIATRIC SURGERY

66 SUNSET STRIP
SUCCASUNNA, N.J. 07876

**CHARMING LADY
BEAUTY SALON**

144 Chestnut Street Nutley
Complete Care and Coloring
Specializing in Perms and Cuts
to suit your special look
667-2133 appt. only Laura Laino

316 Greylock Parkway
Belleville, NJ 07109
Phone 751-6887

Not Just Nails

Total Nail Care
• Waxing • Ear Piercing • Pedicures • Perms
• Unisex Hair Cuts • Colophanes
• Airbrushing • Highlighting
DONNA DEVITO

Wedding Invitations

OVER 1000
TO CHOOSE FROM
C.M. GRAPHICS
215 Belleville Avenue, Belleville, NJ
751-4750 10% Off Coupon

J. COPPOLA & SONS, INC.

EST. 1942 48 YEARS EXPERIENCE
SPECIALIZING IN
Aluminum and Vinyl Siding • Roofing
Gutters, Windows, Doors, Repairs & Additions
429-9266



CARL A. ORECHIO AGENCY
P.O. BOX 615
518 STUYVESANT AVENUE
LYNDHURST, N.J. 07071

BRUCE D. CICCONI

(201) 460-8400
FAX: (201) 460-9258

Low Price
High Quality

Experienced
Accountant

Bill Ziemer
Personal Income Tax Preparation

House Calls
Available

759-0896
Please Leave Message

DON LUBY

ROOFING AND CONTRACTING
"WE AIM TO PLEASE"
RESIDENTIAL & COMMERCIAL
SLATE-TILE SHINGLES • HOT TAR ROOFING • SINGLE PLY ROOFING SYSTEM
BONDED / INSURED / GUARANTEED • FREE ESTIMATES
201-667-3768 Nutley, New Jersey

Aurea

Specializing in
Black Hair
Blow Styling
Precision Cuts

Aurea's Salon
545 Bloomfield Avenue
Bloomfield, NJ 07003
743 • 7706

Tues. Wed. Walk in bet. 10 AM to 6 PM
Thur. thru Sat. By Appointment Only

**DESIGNER CHOCOLATES
BY DENISE**

Chocolates For All Occasions

DENISE GIAIMO

(201) 667-8565

**A-1 POWER WASHING
AND PAINTING**

Interior / Exterior Painting
ANY SURFACE
Also specializing in
• PAINTING • ALUMINUM SIDING
CALL DENNIS
667-8431
Low Prices Insured Free Estimates

WE SPECIALIZE IN:

Driveways
Parking Lots
Exterior Walls
Siding
Roofs
Water Damage
HARDWARE WORK
Fence Staining
Railroad Ties
Underground Piping
Poles • Sidewalks
Delivery Areas

**PETRELLA
ASPHALT PAVING**

Established 1912

IF YOUR DRIVEWAY DON'T BELONG TO YOU,
YOU SHOULD BE COMING TO US.
WE'LL MAKE IT RIGHT. NO MATTER WHAT IT TAKES!
YOUR SATISFACTION IS GUARANTEED!

NUTLEY • 661-9393

J. SIMEONE

Complete Landscaping & Design

• Clean-Ups
• Maintenance • Reseeding
• Sod • Shrubs • R.R. Ties
• Senior Citizen Discount

743-4949

— Special Discount For Spring Season —



Bodies In Heat
THE ULTIMATE IN INDOOR TANNING

372 BROAD ST. STE. 3 BLOOMFIELD NJ 07003 201-429-1804

759-5728

JACK NASSI
JACK NASSI JR.

J & P's Dry Cleaning
SAME DAY SERVICE

• Tailoring • Wedding Gowns • Leather Cleaning
• Shirts Laundered

543 Washington Ave., Belleville, NJ
(Corner of Overlook Avenue)

Girls win two

(continued from page 13)

ten, Calvi had four and Zulay Fiallos finished with one point.

The game was encouraging for many reasons, but two of them were that three players scored in double figures for Belleville and the game was decided in Belleville's favor because of two converted foul shots in the pressure of overtime.

Against Orange, Belleville jumped out to an early 13-4 lead, but Orange came back to cut the lead to 24-20 at halftime. Belleville roared ahead in the third quarter, taking a 34-22 lead, but Orange came back in the fourth to outscore Belleville 11-2 and trim the final deficit to three points, 36-33.

"We committed a slew of turnovers in the fourth quarter," Fuccello said. "They pressed us and we just didn't react to it. Too many of our mistakes resulted in easy points for the opponent."

"But we were able to get the job done and the kids got the win. That's the important thing."

Mannon led Belleville with 18 points. Liz Ramirez and Calvi scored five points each and Fiallos, DeWork, Mary Campbell and Abrams tallied two points each. Belleville's remaining schedule includes today's game at Hackensack against a team the Lady Bucs beat earlier in the season. Then, the final two contests are at Kennedy next Tuesday and at Bloomfield next Thursday evening. As mentioned, Kennedy is a tremendous ball club and Bloomfield is a consistently strong team.

"We'll finish the season against two very good teams," Fuccello said. "But the kids have to learn how to play against these types of teams. It will be a good experience for them."

L.L. clinic

coming soon

Belleville Little League clinics will take place on Wednesday evenings, February 20 and 27 at the Belleville High School gym. The times for both clinics are 6 p.m.

Fielding tryouts for the '91 season will start on March 4 and will continue on March 6. Fielding tryouts will also be held on March 11 and March 13. Applications for tryouts are at all Belleville public schools.

Batting tryouts are set for Saturday, March 9 at 1 p.m. All applicants for the batting tryouts must have already competed in the fielding tryouts.

If anyone has questions on little league tryouts, call Caputo at 759-3002 or Pat Turi, Vice President of the American League, at 751-0190.

Coupon
Special
CAR WASH
\$5.00 + Tax
For Full Service
Exterior \$4.25
(With This Coupon)
EXPIRES 5/31/91

**FRANKIE'S
FUTURMATIC
BRUSHLESS
CAR WASH**
305 Broad St. • Bloomfield
748-9459
Open Mon. Sat. 8 - 6
and Sun. 8 - 4

Patriotism runs deep in Belleville



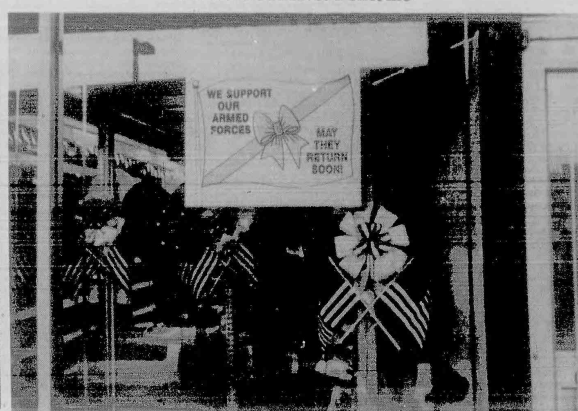
Rossmore Pharmacy
338 Washington Ave. Belleville



Centanni's Deli
82 Overlook Ave. Belleville



Charles Jewelers
163 Washington Ave. Belleville



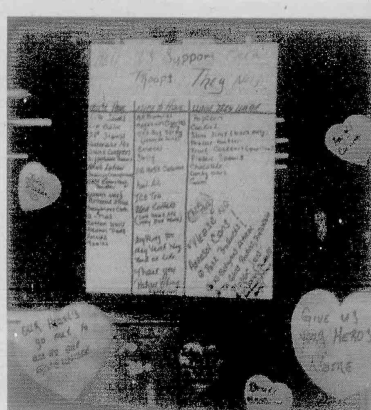
Video Dynasty
388 Main Str. Belleville



Vic and Cathy's
562 Union Ave. Belleville



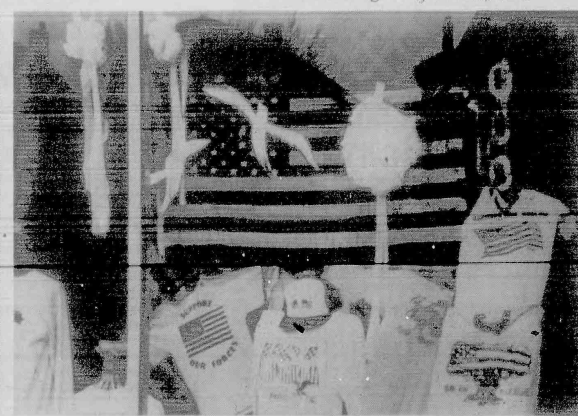
Paradise Flowers
340 Belleville Ave. Belleville



Palmer Video
189 Washington Ave. Belleville



Photo Qwik
361 Franklin Ave. Belleville



Belleville Tee Party
137 Washington Ave. Belleville

THERE'S NO PLACE LIKE HOME

180 Centre St.
Nutley, N.J. 07110
667-3440

GEORGE E. MACMUNN CO.
REALTORS

100 Woodport Road
Sparta, N.J. 07871
729-8727



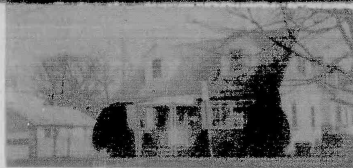
OPEN HOUSE - SUNDAY 1-4PM - NUTLEY, 81 MYRTLE AVE. (Off Grant Ave.) ASKING \$164,900. Walk to park or enjoy deck & pool to lg. fenced yard. 3 BR's, mod kit & bath, rec. rm., new vinyl siding, thermo windows, new gas heat. DON'T MISS THIS!!



NUTLEY - A BEAUTY - ASKING \$259,900. Young home on prof. landscaped lot. Features incl CA, Fam. Rm. w/frpl, 12x22 DR, beautiful oak kit, 4 BR's, 3 1/2 baths, spac. Rec. Rm. w/wet bar.

**DO YOU KNOW
WHAT YOUR
HOUSE IS
WORTH
TODAY?**

We offer a current market
value analysis...
Just pick up the phone & call.



BELLEVILLE - A-1 LOCATION. Walk to High School, immaculate inside & out. 3 BR's, formal DR, 2 full baths, 2 car gar. A great house. ASKING \$164,900.



LAKE MOHAWK - SPARTA - ASKING \$134,500. Priced below market value. Just 18 yrs young, private 127x15 park-like yard w/ views of lake. 3 BR's, 1 1/2 baths, 24x6 Fam. Rm., huge deck, excellent cond. REAL VALUE HERE!

Third generation sale

Dick Schlott of Schlott Realtors is happy to congratulate Lucille Palis Finamore on a rare accomplishment. She has assisted a third generation of one family to purchase property in the Bloomfield, Glen Ridge area.

Yes, the American Dream is still alive. Own your own home! Even in the year of 1990, when the Real Estate industry is in it's third year of a slump, the dream goes on. When John and Gerry Generazio realized their offices in Irvington were too small for their expanding insurance company, Lucille sold them what had been Dr. Ostrowski's office and home on Broad Street. That was in 1978. It was the first property she sold to them. Lucille encouraged John to utilize the vacant land next to the office by adding on to the existing building. John had a better idea. The old converted office was leveled and a beautiful new brick colonial office building has been erected on the site.

The Generazio Insurance Company has done well in Bloomfield and Bloomfield has a tax rateable it can be proud of.

In 1980, Lucille sold a home in Glen Ridge to John's parents, Mary and the late Michael Generazio. In 1990, she sold to the third generation when Michele Generazio-Chierico and Philip Chierico purchased their home in Bloomfield. Michele is employed in her father's insurance business as is her husband Philip.

When asked how Lucille felt about the third generation sale, she said, "I love this business and it's nice to know that this family has been satisfied with the service that I have provided for them."

Mrs. Finamore has been selling real estate in New Jersey for 20 years. She has achieved the GRI and CRS designations for on-going education and has a broker's license. The Schlott office is located at 103 Park Street, Montclair.



THIRD GENERATION REAL ESTATE SALE — (seated from left: Michele Generazio-Chierico, Lucille Finamore, Gerry Generazio, (standing) Philip Chierico, Mary Generazio, John Generazio.

N.J.A.R. to award eleven scholarships

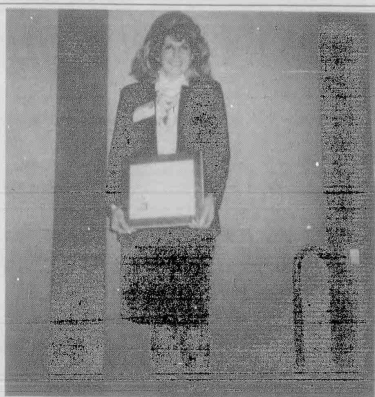
Lucietta Monteleone, President of the Bloomfield, Glen Ridge, Nutley and Belleville Board of Realtors, announced recently that the New Jersey Association of Realtors Educational Foundation will be awarding up to eleven (11) scholarships to students pursuing careers in real estate related fields. There will be up to ten (10) \$1,250.00 scholarships, including the C. Arnel Nutter Scholarship and a special \$2,000.00 scholarship, the Nancy F. Reynolds Scholarship, to be awarded. Students must be bona fide residents of New Jersey in their first to fourth years, or in advanced graduate programs.

Applications may be obtained

from the local Realtor Board office at 375 Broad St., Bloomfield, N.J., and must be returned to the New Jersey Association of Realtors Educational Foundation, P.O. Box 2098, Edison, N.J. 08818 by April 15, 1991. (This deadline is strictly adhered to).

The selection of the recipients will be made in May by a committee of several Trustees of the Foundation after review of all applications and personal interviews of selected candidates.

President Monteleone has been advised by Realtor Mary M. Spano of Teaneck, Foundation President, that this will be the ninth year of the continuing annual program.



Dee Rubinich

Dee Rubinich named Realtor Associate of the Year

Camille Maas, owner/broker of Centre Realty of Nutley, announced that the prestigious Realtor Associate of the Year Award was won by Realtor Associate Dee Rubinich. The award was presented to Dee by the president of the New Jersey Association of Realtors at their annual convention in Atlantic City in December. The Board of Realtors of Bloomfield, Glen Ridge, Nutley and Belleville awarded this honor to Realtor Associate Dee Rubinich in recognition of her outstanding contribution to the community, the Realtor Association and the real estate industry, for the year 1990.

Dee, a Million Dollar Sales Club award winner, has been a consistent top producer with Centre Realty of Nutley for 12 years. She

presently chairs the Board Entertainment Committee and is active in local politics and community affairs. Dee and her husband Ed have been Nutley residents since 1965 and have a son Tony and a daughter Lisa.

Centre Realty of Nutley is a progressive agency located at 473 Centre Street, in Nutley, whose professional staff lends their knowledge and expertise to the real estate business seven days a week. The newest member of the Centre Realty staff is Lorraine Immediato, a Nutley High School graduate and present Nutley resident. She joins veteran staffers, Dee Rubinich, Connie Gonnella, Mark Kohl and Cheryl Wickenhiser in providing personalized and professional real estate services.

The Home Front

By Nina Kaeser



Did You Know??

Every room should have a focal point. If a room doesn't have a fireplace or a big bow window, create interest with a large painting or armoire, a bookcase, even a good-size mirror over a console table.

The cleaner of choice for pet urine stains on carpets is a solution of 2 cups white vinegar in a gallon of warm water. (It's environmentally sound, too.)

Energy-efficient homes may qualify for more mortgage. Both the Federal Housing Administration and the Federal National Mortgage Association will accept a 2 percent higher debt-to-income ratio for those buying an energy-efficient home, though paperwork may be daunting.

Remodeling a bath? Choose moisture-resistant materials for walls, ceilings and floors. Gloss and semi-gloss paint, vinyl wall coverings and ceramic tile are ideal. Carpets tend to mildew.

Rule of thumb for furniture arrangements: there should be about 18 inches between a coffee table and its neighboring sofa or chair to allow comfortable passage between them.

Rule of thumb for househunting: you'll find a wide selection of just-right homes at Century 21 Stanford Agency, 86 Union Ave., Nutley. 235-9000.

ADVERTISE!

Century 21 Stanford Agency

George Might Say... I've surveyed them all and this is the best. Cozy yet full of all the modern amenities you could want including central air. NUTLEY \$179,900	Like Washington Himself... I cannot be about the quality found in this large Colonial with stained glass windows and gas working fireplace. 4 BR's-large lot. BELLEVILLE \$159,900	Price is Chopped Down Many renovations - new kitchen, powder room, bath and siding. What else? Call to find out! BELLEVILLE \$119,900
You'll Love This One... Youthful expanded ranch with fireplace in living room, 3 large bedrooms and 2 full baths & finished basement. BELLEVILLE \$189,000	Abs! Said My Cable... We have a fortress of space in this brick 2 family. This solid structure boasts a total of 10 rooms - move in or collect nice income. BELLEVILLE	Next to Mount Vernon... Washington would have loved this Colonial styled home with sun parlor and recreation room and close to transportation. BELLEVILLE

Century 21
STANFORD AGENCY

86 Union Ave.
Nutley, N.J.
235-9000

Each office independently owned and operated

BETTER HOME VALUE

NUTLEY

COMPLETELY MODERN

SPRING GARDEN SPECIAL
On 245' deep lot, 6 rooms, bath, family room, fin basement, move in condition.

On 75' x 139' lot w/in-ground pool, 4 good size bedrooms 2nd fl. All lg 1st flr rms w/scenic kitchen and powder rm.

BLOOMFIELD
IMAGINE ONLY \$189,000

Brookdale section close to Oakview School and N.Y. bus. 2 full baths, lovely family room, secluded patio, move in condition.

EVERYONE KNOWS

GEORGE T. BOWES
YOUR NUTLEY REALTOR SINCE 1933
681 FRANKLIN AVE. NUTLEY 667-3370



THE CLASSIFIEDS

Call:
667-3000

AUTO SALES

1996 MAZDA 626-LX, 2 dr auto, AM/FM cassette, air power, cruise. New tires, brakes, exhaust. \$4500 or B.O. 748-5450.

1987 DODGE-Mitsubishi, 45K mls. Shift, 5 spd \$3,200, negs. 963-1184

AUTO WRECKERS

JUNK CARS WANTED
*Free Tow-Away
*Same Day Pick-Up
(In Most Cases)
B.O.S. TOWING, INC.
429-4471 Bloomfield
481-2610 Newark

GENERAL NOTICES

ANCIENT SIBERIAN ASTROLOGER
Find love, increase wealth, solve problems, live a richer, fuller life. Timely daily advice. \$2 per minute.
Phone 1-900-535-4900
Extension 515

CARIBBEAN ONLY \$1899 Don't freeze here! The warmth of the sun of the Caribbean or Mexican coast for a week. RA air. SUNHITZ.COM
1-312-864-2009

PARTS ACCESSORIES SERVICES

BIB'S
WILL PAY CASH FOR ANY JUNK CAR IN ANY CONDITION
Highest prices paid for late models.
USED CARS & TRUCKS
991-4246 or 991-0081
54 Stover Ave., Kearny

Kia's
STANDARD & AUTOMATIC 4-WHEEL DRIVE TRUCKS & CARS
FREE ESTIMATES **998-9666**
(Across from North Arlington)
28 RIVER ROAD, NORTH ARLINGTON

GENERAL NOTICES

MAKE A FRIEND... FOR LIFE
EUROPEAN, AUSTRALIAN, YUGOSLAVIAN HIGH SCHOOL EXCHANGE STUDENTS... ARRIVING... AUGUSTS... HOST FAMILIES NEEDED! AMERICAN INTER-CULTURAL STUDENT EXCHANGE. CALL TOLL FREE 1-800-SIBLING
LOST & FOUND

Lost charmbracelet (gold) shaped like a fan w/ charms. Sentimental Value Nutley Shop rite area. 434-3316

PERSONAL NOTICES

HOROSCOPE READINGS: EXCITING PERSONAL REVELATIONS ABOUT LOVE, MONEY, HEALTH, HAPPINESS! STASTALING PREDICTIONS FOR YOU FOR 1991.
1-800-246-4700
ONLY \$2/MIN.
CALL 24 HRS., 7 DAYS (KS97)

PARTS ACCESSORIES SERVICES

ATTENTION! AUTO PARTS
NANNY NIS INFANT CARE CENTER
Full Day Sessions 6 weeks to 2 Yrs. Old
204 Washington Avenue
Belleville 759-1524
Director: Dolores Ash

THE MAGIC COUNTRY NURSERY SCHOOL
A Place Where Learning is fun
State Certified School & Teachers. Year round half or all-day sessions.
*Arts & Crafts
*Science
*All Day Kindergarten
Registration accepted now 759-8758
393 Washington Ave. Belleville (Cor. Essex St)

PERSONAL NOTICES

HELP! If you have info about or know Richard George Yatch or family members please call 1-405-547-5433, 1-405-624-0223, or send info to Rt. 3, Box 867, Perkins, OK 74859

WHY PAY MORE? Do It Yourself
Divorce Kit
Monday-Friday 9 AM to 5 PM
(201) 782-5540

CHILD CARE

CHILD CARE - Bloomfield home. Will provide loving care, attention. Call 748-4789
Looking for mother to care for 5 yr old occasional weekends & school holidays + 77 summer. After 5 647-6089

BABY SITTING SERVICES

Exp mother of a 2 yr old boy looking to babysit an infant or toddler in her Belleville home. 759-8129

NURSERY SCHOOLS

St. Mary's has it All! 73 yr. old program "4 yr. old program" *Full Day Kindergarten *After School Center for Working Parents For further information Call 667-0801

CLARA MAASS MEDICAL CENTER
A 475-bed health care facility located in Belleville, NJ, currently has a one-year temporary position available in our Quality Assurance Review Dept.
Responsibilities include research of clinical data as well as data entry of alpha and numerical information. Knowledge of PCs a plus.
We offer flexible working hours and a pleasant environment. Interested candidates, please call Deborah Patti, Human Resources Recruiter at 450-2117.

GENERAL OPPORS.

Burglar Alarm Installer helps P/T & F/T. No exp. needed.
Call 781-4512

Calling all teens and pre-teens. You could be the next Miss Teen New Jersey or Pre-Teen. Call parent headquarters today for information 1-609-654-6585

GENERAL OPPORS.

Child Care/ Housekeepers, live-in positions avail. English speaking, refs. Driver's license a plus.
Continental Domestic Agency Inc. 857-8538
10-4, Mon-Friday, 509-7806 Even.

Dark Room Tech/Counter-RT person for X-ray dark room in Dr's office. Some clerical work, back-up courier. Will train. Call Ms. De Marco or Ms. Edmondson After 5 647-6089

DATA RESEARCH/ENTRY

Clara Maass Medical Center, a 475-bed health care facility located in Belleville, NJ, currently has a one-year temporary position available in our Quality Assurance Review Dept.

Responsibilities include research of clinical data as well as data entry of alpha and numerical information. Knowledge of PCs a plus.

We offer flexible working hours and a pleasant environment. Interested candidates, please call Deborah Patti, Human Resources Recruiter at 450-2117.

CLARA MAASS MEDICAL CENTER

One Franklin Ave. Belleville, NJ 07109
Equal Opportunity Employer
EXCELLENT INCOME EASY WORK! ASSEMBLE PRODUCTS AT HOME. CALL 1-800-338-8242 EXT 1925 24HRS

GENERAL OPPORS.

FEDERAL LAW ENFORCEMENT
No experience necessary. For application info, call (1) 219 785-6661 Ext. NJ468, Mon - 8pm, 7 days.

HOME TYPISTS, PC users needed. \$35,000 potential. Details: (1) 805-687-6000 Ext. B-7100 PerMin.

GENERAL OPPORS.

HOMEWORKERS WANTED Immediately! No experience necessary. Sewing, Needlecraft, Ceramics, Typing, Sales, Electronics. \$1.95 PerMin.

NEW COTTAGE INDUSTRIES 1-900-776-0438

MODEL SEARCH Career Opportunity Kids, Teens, Mid Twenties+No Exp Nec. Cover Girl Studio 261-2042 LEBW0 193200 630 K Rd. Re

POSTAL JOBS

\$114 to \$194/hr. For exam & application information call 1-219-769-6649 Ext. NJ179. 8AM-8PM, 7 days.

RECEPTIONIST/ TYPIST

Prefer exp in WP & multi-line console. Some filing & general office. We seek an indiv who is poised, has a pleasant manner, a profl appearance, is reliable, energetic & good with names. Solid attendance record & references req'd. Write (send resume) for appt indicating availability & salary history to:

DEPT B

L.J. GONZER
1225 Raymond Boulevard
Newark, N. J. 07102

SUMMER JOBS Ideal for teachers. Coordinator needed for student exchange program in your community. No experience necessary, but motivation needed. GOOD PAY.
CALL ACCE 1-800-334-2268

GENERAL OPPORS.

STOCK PERSON TO FILL ORDERS & STOCK SHELVES FOR AUTO PARTS WAREHOUSE IN NUTLEY. EXPERIENCE NOT NECESSARY. COMPANY PAID BLUE CROSS & BLUE SHIELD. MON-FRI 8:20-5PM 1/2 DAY SATURDAY OVERTIME \$5 HR TO START WITH RAPID PAY ADVANCEMENT. 667-1234

GENERAL OPPORS.

SUPERINTENDENT/ PORTER Couple as Assistant Supt. for luxury apte house in South Orange. Duties include part time uniformed doorman and various porter services. Salary plus attractive appt. Please call 623-4922 M-F, 9:30-4:30.

SWITCHBOARD OPERATOR PER DIEM

GENERAL OPPORS.

Our 400+ bed community hospital seeks an individual with Dimension switchboard experience for per diem coverage on all shifts as needed.

Hospital experience is preferred.

Call our Employment Coordinator for an application. (201) 429-6154.

THE MOUNTAIN SIDE HOSPITAL Bay & Highland Avenues Montclair, NJ 07042 an equal opportunity employer

WATKINS AND CASHIER

Experienced. Apply in person at The Stack Restaurant, 205 River Road, North Arlington.

Wanted! I need help for my business full-time or part-time. We'll train you. French, German, Spanish, Portuguese, Korean apply. Miss Farla 1-212-630-1881 or 1-800-395-6692

GENERAL OPPORS.

WORK AT HOME ASSEMBLING PRODUCTS. EARN \$300-\$500 WEEKLY. NO SELLING. YOU'RE PAID DIRECT. EASY WORK. NO EXPERIENCE. GUARANTEED INCOME. MANY OPPORTUNITIES. CALL 1 (714) 991-2930 ANYTIME

PART-TIME HELP

DRIVER Part time. Extra cash. Good working conditions. Call 759-3509, ask for Michael.

HERE WE GROW AGAIN!

Nutley/Belleville The Star-Ledger needs good enthusiastic Part Time early a.m. help. Immediate openings in your area as a Circulation Service Representative or an Adult Carrier! Earn \$400 - \$500 per month. Interested? Call now 1-800-242-0850.

PART TIME

Exc. sal. + bonus. Clifton office. 6-9 P.M., Mon-Thurs. Students accepted. Weekends avail. Customer service dept. 846-5439 bel. 5-9pm

TELEMARKETERS/ CANVASERS

Guaranteed income. Flexible hours. No experience necessary.

Call for appointment

661-5027

FINANCIAL

\$ NEED CREDIT \$ 5500.00 CREDIT CARD REGARDLESS OF CREDIT HISTORY. MAJOR BANK CARDS ALSO AVAILABLE. PLUS A FABULOUS CAMERA, FILM, AND VACATION PACKAGE. PHONE 1 (602) 948-9377, EXTENSION - 46

BUSINESS OPPORS.

Thinking about a career change? Get in the fastest growing business in the Country. Franchise service business. \$60,000 +. Serious inquiries only. Maid of Gold 1-609-859-3072

LOANS PARTNERS DEALERSHIPS

LOANS BY MAIL Up to \$5,000 in 72 hours. We can help you get a signature loan by mail. 1-900-246-6500 \$9.95 fee

TAX

ALL TAX RETURNS PREPARED

Federal NY & NJ Call for appt. Kevin McElafferty 667-8534

PROFESSIONAL PREPARED COMPUTRIZED TAX RETURNS

"Reasonable Rates" Call Scott at 759-1415 for an appointment

TAX PREPARATION WALTER SLUBERSKI CPA

Low rates. Pick-up at Your Home, even, and W/E's 893-1291

TAX PREPARATION SERVICE BY CPA

REASONABLE RATES FOR APPT. CALL 661-9255

TAX PREPARATION

Low Price, high quality Personal Income Tax Preparation by Exp. Accountant CALL BILL 759-0896

THE PERSONAL TOUCH

Tax returns prepared by attorney w/ 20 yrs legal tax exp. Pick-up & deliver. Real rates. Call after 7pm 667-6813

ARTICLES FOR SALE

Apartment Sale-Belleville, 110 Horblower Ave. Sat, 2/16 10 am to 4 pm. 2nd week all 1/2 price. 2 x 12 oriental rugs. Inquires call 635-1398

ARTICLES FOR SALE

ESTATE SALE DEALERS WANTED CALL FOR INFO. 831-0773

HOUSE SALE

Sunday Feb. 17, 10 AM to 5 PM. 48 Continental Ave., Belleville.

WANTED USED AIR CONDITIONERS CASH 482-3681

Wedding gown & veil, sz. 6, w/face appliques & sweetheart neckline. Must be seen! \$750, exp. floor length, red headed evening gown, \$200.

WOLF TANNING BEDS New Commercial-Home Units From \$199.00. Lamps. Lotions. Accessories. Monthly Payments Low As \$18.00. Call Today FREE Year Color Catalog 1-800-228-6292

ARTICLES WANTED

Gun Collector Lic. #234 Wants to buy for cash: *Guns *Swords *Daggers *Bayonets *Especially Military Items CALL 783-6145

I'M BUYING TOOLS

"Old" "New" "Used" "Any Type" "Any Quantity" CALL "GENIE" 696-4908 4-6 PM weekdays After 6:30 PM weekends

INTERMEDIATE ELECTRIC HOT WATER

portable tankless heater. wanted. Reasonable. 667-7667

LIONEL AND OTHER TRAINS

COLLECTOR PAYS TOP PRICE CALL 334-8709 or 635-2058

NEED CASH WE BUY: Old gold, silver, silver coins & diamonds

Gold Mine Trading 725 Washington Ave. Belleville (inside Pathmark) 450-5953

667-3000
Mon. thru Fri.
9:00 AM to 5:00 PM
Deadline - Tues. 12 Noon

CLASSIFIED	INDEX
CHECK YOUR AD THE FIRST DAY OF PUBLICATION. The Nutley Sun, Belleville Times & Bloomfield Life are responsible for MAJOR errors in the first day's insertion.	EMPLOYMENT
CREDITS: Credits & adjustments are to be made only for errors which significantly alter the effectiveness of the ad, such as a wrong telephone or price. Credits will be used for typographical errors or misquoted words. The newspapers can assume responsibility only for MAJOR errors in the first day's publication.	FINANCIAL
Classified line ads appear in all three newspapers: NUTLEY SUN, BELLEVILLE TIMES, BLOOMFIELD LIFE	INSTRUCTION
and will appear once, free of charge, on OBC-TV Channel 6 during "The Community Bulletin Board" time frame.	MERCHANDISE
	PETS & LIVESTOCK
	REAL ESTATE
	RENTALS
ANNOUNCEMENTS	
CHILD CARE	DIAL-A-SERVICE

EMPLOYMENT

SECRETARY

LEGAL SECRETARY

201-743-2829

EMPLOYMENT WANTED

Experienced Secretary seeking position.

Nutley/Belleville area. Call aft. 4 pm, 661-4406

GENERAL OPPORS.

\$3900 MONTHLY POSSIBLE ASSEMBLING PRODUCTS

1-609-693-5955 ext. 15: READ BOOKS \$100 A TITLE 1-215-440-6437 EXT. 15 EARN UP TO \$500.00 A WEEK TYPING 1-215-440-6440 EXT. 15

ALL PHASE EMPLOYMENT SERVICE

382 Franklin Ave. Nutley, N. J. 661-W.O.-B.K. 997-W.O.-B.K. Permanent & Temporary F/T & P/T positions Vacation Plan

AVON

Work for yourself! Help pay some bills. Sell Avon! Call Claire at 429-0301

BOOKKEEPER F/T

A/P/Receivable, reconciliation and previous bookkeeping exp required. Must have Lotus/computer spread sheet experience. Please call: 201-743-2828

"Our commitment to serve you better"

CLASSIFIED ADVERTISING

Run your prepaid classified ad with us for a minimum of three weeks. If your ad has not been successful, we will run your ad for an additional two weeks FREE OF CHARGE.

667-3000



Grand Re-Opening
ShopRite of Freehold
South St. & Rt. 9, Freehold, NJ

PRICE
WITHOUT
COUPON
4.4-LB.
BOX lb.

SHRIMP SAVINGS FOR LENT!

FROZEN, 31-40 PER LB.
WHITE, FARM RAISED

Large Shrimp
24⁹⁵
THAT'S JUST
5.67 PER LB.

SAVE
5⁰⁰
WITH THIS
COUPON

ShopRite Coupon

WITH THIS COUPON

Farm Raised Large Shrimp

Less Than
4.54
per lb.

19⁹⁵

Limit one. Good at any ShopRite.
Sun., Feb. 10 thru Sat., Feb. 16, 1991.

SAVE 5.00

The MEATing® Place

ShopRite ALL NATURAL 10-12 LBS.

Fresh Turkeys

.49

- CENTER CUT Boneless Pork Chops** 1 lb. **3⁹⁹** SAVE 1.00 A.L.B.
- LOW SALT HAM & WATER PRODUCT, SMOKED
Shank Portion Ham 1 lb. **1.19**
- LOW SALT HAM & WATER PRODUCT, SMOKED
Butt Portion Ham 1 lb. **1.39**
- LOW SALT HAM & WATER PRODUCT
Smoked Ham Steaks 2 lb. **2.99**
- FROM RUB END
Boneless Pork Loin Roast 2 lb. **2.29**
- FROM LOIN END
Boneless Pork Cutlets 2 lb. **2.99**
- SIGNATURE 80% (2-LB. PKG.)
Lean Ground Beef 1 lb. **1.59**
- SIGNATURE 85% (1-LB. PKG.)
Extra Lean Ground Beef 1 lb. **1.99**
- ShopRite SMOKED (WATER ADDED)
Smoked Pork Butts 2 lb. **2.79**

6 DRUMS, 6 WINGS & 6 THIGHS

Perdue 18-Pc. Fryers

.79

- HOLLY FARMS SKINLESS & Boneless
Chicken Breast 1 lb. **2⁹⁹**
- WHOLE WITH THIGHS
Perdue Chicken Legs 1 lb. **.89**
- WHOLE UNTRIMMED, 9-LB. AVG.
Beef Tenderloin 1 lb. **4.99**
- THE ORIGINAL LONDON BROIL
Beef Flank Steak 1 lb. **3.99**
- PERDUE FRESH
Chicken Wings 1 lb. **.99**
- FRESH TWIN PACK
Perdue Cornish Hens 1 lb. **1.49**
- ShopRite FRESH TURKEY
Wings or Drumsticks 1 lb. **.89**
- APPROX. 3 LBS. ShopRite
Polska Kielbasa 1 lb. **2.19**
- ShopRite
Turkey Kielbasa 1 lb. **1.99**

The Produce Place

IRON & OTHER MINERALS, CALIF.

Iceberg Lettuce

LARGE SIZE

.69

- LOW SODIUM, RED FLAME
Seedless Grapes 1 lb. **.99**
- LOW IN CALORIES, WASHINGTON STATE 100 SIZE
Anjou Pears 1 lb. **.89**
- WASH. STATE EXTRA FANCY 100 SIZE
Red Delicious Apples 1 lb. **.89**
- TREE RIPE PLUMS, NECTARINES OR
Tree Rippe Peaches 1 lb. **1.99**
- LOW IN CALORIES, 100 SIZE
Granny Smith Apples 1 lb. **.89**
- VITAMIN 'C' 120 SIZE
Honey Tangerines 5 for **.99**
- VITAMIN 'C' CALIF.
Kiwi Fruit 3 for **1.00**
- IMPORTED FROM SOUTH AMERICA, 15 SIZE
Sweet Cantaloupes each **1.49**
- VITAMIN 'C' FLORIDA
Grapefruit or Oranges 5-lb. bag **2.49**

VITAMIN 'C' 48 SIZE WHITE

Florida Grapefruit

5.99

- TASTE THE DIFFERENCE, LARGE 4X5 SIZE
Devine Ripe Tomatoes 1 lb. **.99**
- VITAMINS 'A' & 'C'
Green Peppers 1 lb. **.89**
- VITAMIN 'C' FIRM RIPE
Plum Tomatoes 1 lb. **.69**
- VITAMIN 'C'
Firm Ripe Tomatoes 26-oz. pkg. **1.49**
- TASTE THE DIFFERENCE
Israeli Tomatoes 1 lb. **1.99**
- VERY LOW SODIUM
Fresh Asparagus 1 lb. **1.99**
- VITAMIN 'C' CALIF.
Broccoli Rabe 1 lb. **.99**
- HIGH IN VITAMIN 'C'
Green Cabbage 1 lb. **.29**
- VITAMINS 'A' & 'C'
Green Squash 1 lb. **.59**

The Deli Place

WHY PAY MORE?™

Wilson Meat Franks

1-lb. pkg. **.99**

- SLICED REG. OR LOW SALT
Wilson Bacon 2-lb. pkg. **3.00**
- WHY PAY MORE?™
Wilson Beef Franks 2-lb. pkg. **3.00**

The Fresh Fish Market

SAVE 2.00 A.L.B.

STORE SLICED, FARM RAISED

Fresh Salmon Steak

4.99

- STORE SLICED
Fresh Shark Steak 1 lb. **3.99**
- U.S. GRADE 'A' SOUTHERN
Fresh Catfish Fillet 1 lb. **4.99**

The Frozen Food Place

ASSORTED VARIETIES

Elizabeth York Ice Cream

1-gal. can. **1.49**

- STUFFERS
Macaroni & Cheese 12-oz. pkg. **.99**
- CRUNCHY OR CRISPY BATTER STICKS OR BATTER
Gorton's Fish Fillets 7-oz. pkg. **1.19**

General Merchandise

11 1/2-qt. RUBBERMAID DISHWASH DR.

Rubbermaid Laundry Basket

3⁰⁰

- GREAT FOR A DOZEN ROSES
9" Anchor Boxed Vase each **3.00**
- SCOTCH
Transparent Tape 2 1/2" x 500' rolls **1.00**

For Your Valentine

WITH SPAN OF BABY'S BREATH

Long Stemmed Roses

11, 12, 13 & 14TH

24⁹⁵

AVAIL. FEB. 11, 12, 13 & 14TH

1-Doz. Rose Bouquet ea. **19.99**

SPECIAL BOUQUET OF FRESH FLOWERS
Sweetheart's Bouquet ea. **5.99**

SPECIAL ASSORTMENT OF FRESH FLOWERS
Lover's Bouquet each **9.99**

LOCKED-IN SAVINGS

NOW THRU MARCH 23, 1991. LOOK FOR THE LOCKED-IN SAVINGS SIGNS THROUGHOUT THE STORE. ShopRite Does It RIGHT™

- CHICKEN OR BEEF
College Inn Broth 12-oz. can. **5¹⁹⁹**
- REG. OR REDUCED CALORIE
ShopRite Mayonnaise 1-lb. jar **.99**
- CORONET WHITE OR DEC.
Sparkle Towels 90-ct. roll **.59**
- REG. OR UNSCENTED
Tide Liquid Detergent 1-gal. btl. **5.99**
- REG. OR UNSCENTED
Wisk Liquid Detergent 1/2-gal. btl. **2.99**
- LIQUID BLEACH
Liquid Bleach 1 1/2-gal. btl. **.99**
- SUPERSEAL 16-OZ.
Measuring Cup each **1.49**
- RUBBERMAID
Measuring Cup 2 for **3.00**

The Grocery Place

BRIK PACK

Chock Full O' Nuts Ultra Coffee

10 1/2-oz. bag **.99**

- ALL VARIETIES
Undercover Bears Instant Oatmeal 12.5-oz. box **1.24**
- ShopRite CLEAR OR NATURAL
Apple Juice 1/2-gal. btl. **.99**
- ALL VAR. SUNNY DELIGHT
Sun Sip Drinks 1-qt. 14-oz. can. **.49**
- ShopRite APPLE, BLUEBERRY OR
Cherry Pie Filling 1-lb. 5-oz. can. **.69**
- ASSORTED VARIETIES
Andes Mints 6-oz. box **.74**

Fresh Bake Shoppe

WASHINGTON'S BIRTHDAY SPECIAL

Freshly Baked 8" Cherry Pie 28-oz. **2⁹⁹**

- FRESHLY BAKED
Hot Cross Buns 10-oz. pkg. of 6 **1.49**
- CHOCOLATE OR YELLOW TANG
Valentine's Layer Cake 30-oz. **6.99**

REG. DIET OR CAFF. FREE MOUNTAIN DEW

Pepsi or Slice

2-lit. btl. **.99**

- ASSORTED VARIETIES
ShopRite Sandwich Cremes 2-lb. pkg. **1.26**
- ASSORTED VARIETIES
Gravy Train Dog Food 4 1/4-oz. cans **.99**
- ASST. VAR. NORTHERN
Bathroom Tissue 300-ct. rolls 6-roll pk. **1.99**
- VEGETARIAN
Heinz Beans 2 1-lb. cans **.99**
- SOLID PACK, IN OIL OR WATER
ShopRite White Tuna 6 1/2-oz. can **.89**

Chef's Express

WHY PAY MORE?™

Chef's Express Cheese Pizza 25-oz. pkg. **3⁹⁹**

- CHEF'S EXPRESS
Fish Cakes 3-oz. **.99**
- CHEF'S EXPRESS
Macaroni & Cheese 1-lb. **1.99**

The Dairy Place

REG. OR HOMESTYLE, PURE PREMIUM

Tropicana Orange Juice

1-gal. cart. **1.99**

- AMERICAN
Borden Singles 12-oz. pkg. **1.99**
- WHOLE MILK OR PART SKIM
ShopRite Ricotta 3-lb. cont. **3.49**

The Appy Place

STORE SLICED

Borden American Cheese

1-lb. **2.49**

- FRESH SEAFOOD OR
Neptune Salad 1 lb. **4.99**
- STORE SLICED IMPORTED
Majesty Danish Ham 1 lb. **3.99**

The Bakery Place

WHEAT OR WHITE

Country Hearth Split Top Bread

12-oz. loaf **.74**

- WASHINGTON'S BIRTHDAY SPECIAL!
- ShopRite Cherry Pie** 16-oz. box **.99**
- REG. KRINKLE, NO SALT, BBO OR SOUR CREAM & ONION
ShopRite Potato Chips 10-oz. **.99**

Health & Beauty Aids

WHY PAY MORE?™

Extra Strength Tylenol Caplets

50-ct. btl. **4⁰⁰**

- ALL VAR. CONDITIONER OR
Suave Shampoo 16-oz. btl. **1.00**
- SHOPIRTE 100% COTTON TIPPED
Cotton Swabs 2 90-ct. boxes **1.00**

WITH THIS COUPON

Francesco Rinaldi Spaghetti Sauce

ASST. VAR. 1-PT. 14-oz. jar **.99**

Limit one. Good at any ShopRite.
Sun., Feb. 10 thru Sat., Feb. 16, 1991.

SAVE .40

WITH THIS COUPON

Bumble Bee Solid White Tuna

IN OIL OR WATER 6 1/2-oz. can **.89**

Limit one. Good at any ShopRite.
Sun., Feb. 10 thru Sat., Feb. 16, 1991.

SAVE .30

WITH THIS COUPON

Classic Coke or Sprite

8-oz. can 12-pack **1.69**

Plus Disp. Where Req.

Limit one. Good at any ShopRite.
Sun., Feb. 10 thru Sat., Feb. 16, 1991.

SAVE